

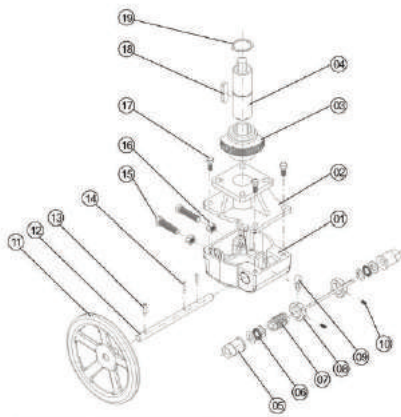
MANUAL OVERRIDE

Main Purpose

The manual operation is supporting the use of pneumatic actuator. It is a main part of automatic control system and mainly used to open and close 90° angular travel valves by manual power, such as butterfly valve, ball valve and plug valve, etc. It also can be used for automatic control products.

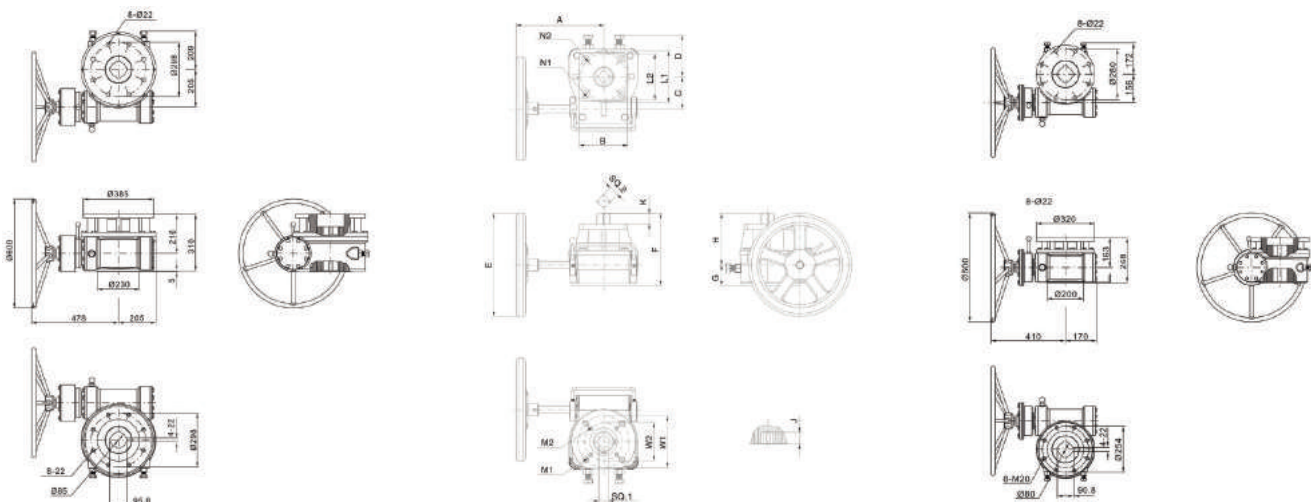
Product Feature

- Small, light, reasonable design and novel style
- Output torque is good match the pneumatic actuator and valves
- The connection standard of KH series is complied with ISO5211 standard. The upper part is square tenon while the lower part is square hole; The inner hole of series 320:1 and 450:1 have some keyways so that user can adjust the location for different valves;
- Lift the stop pin then rotate the eccentric device 180° or 90°, the stop pin will automatically limit to achieve pneumatic. On the contrary, achieve manual operation;
- When the product is shipped, equipped with special grease. After installation, the seal of waterproof and dustproof is complied with IP65

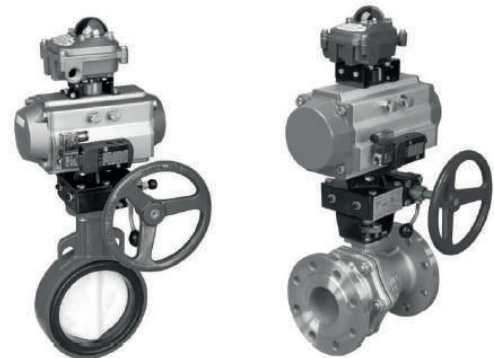


PART NO:	QTY	NAME	STANDARD METARIAL
01	1	Body	Aluminium alloy/carbon steel
02	1	Cape	Aluminium alloy/carbon steel
03	1	Gear	Nodular cast iron
04	1	Connecting shaft	Carbon steel
05	1	Eccentric bushing	Carbon steel
06	1	Bearing units	Bearing steel
07	1	Vortex rod	Carbon steel
08	1	Handle	Carbon steel
09	1	Limit components	Carbon steel / others
10	1	Stopper srew	Carbon steel
11	1	Hand wheel	Carbon steel
12	1	Worm wheel shaft	Chromplated Carbon steel
13	1	Round pin	Carbon steel
14	1	Round pin	Carbon steel
15	1	Adjustable bolt	Stainless steel
16	1	Nut	Stainless steel
17	1	Bolt	Stainless steel
18	1	Flat key	Carbon steel
19	1	Circlip	Bearing steel

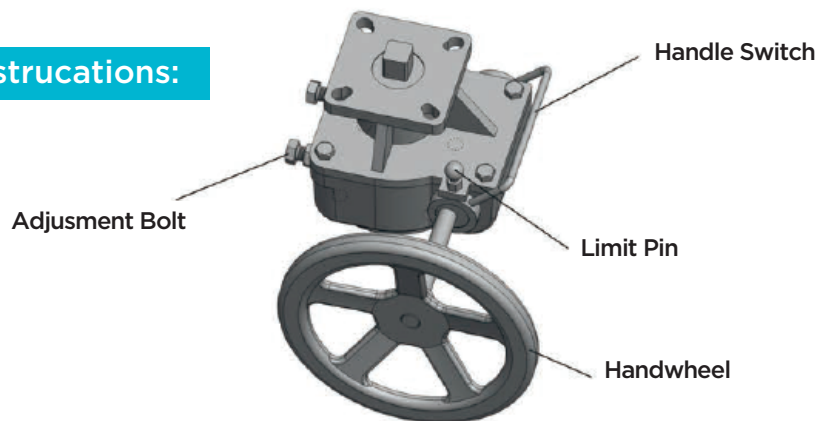
Dimensions



MODEL	KH-1	KH-2	KH-3	KH-4	KH-5	KH-6	KH-7	KH-8
A	150	170	200	260	310	395	435	440
B	70	95	115	140	155	160	235	300
C	50	55	82	85	125	140	170	210
D	43	65	90	102	110	140	160	170
E	Ø180	Ø200	Ø280	Ø300	Ø400	Ø500	Ø600	Ø600
F	120	127	150	195	209	233	243	252
F	35	40	40	60	55	60	60	65
H	85	87	110	135	154	172	183	187
J	16	19	24	29	40	50	58	58
K	15	19	22	28	39	48	55	55
M1	M8X4	M10X4	M12X4	M16X4	M20X4	M20X4	M16X8	M16X8
M2	M6X4	M8X4	M10X4	---	---	---	---	---
W1	70	102	125	140	165	165	200	254
W2	50	70	102	---	---	---	---	---
SQ.1	14	17	22	27	36	46	55	55
N1	Ø10X4	Ø12X4	Ø14X4	Ø18X4	Ø22X4	Ø22X4	Ø18X8	Ø18X8
N2	Ø8X4	Ø10X4	Ø12X4	Ø16X4	Ø18X4	---	---	---
L1	70	102	Ø125	140	165	165	200	254
L2	50	70	102	125	140	---	---	---
SQ.2	14	17	22	27	36	46	55	55



Operating Instructions:



Lift the limit pin

Manuel operation

Filed a limit pin rotating switch handle, a left-handed upward direction to manually limit position, confirmed already in place, then the turbine worm bite, turn the handwheel to open and close the valve.



Left rotate to manual operation

Automatic operation

Filed a limit pin rotating switch handle, right to the top and bottom to automatic limit position, to confirm that already in place, the turnbine worm out, turn the handwheel belong to idle



Right rotate to auto operation

NOTES:

Swih in his hand up and down turns sticking phenomenon may occur, because this is a worm gear and worm bite, as long as light wave wheel cancel this jam phenomenon.

TORK-MOR	Output Torque (Nm)	Input Torque (Nm)	Gear Ratio	Handle Diameter (mm)	Valve Assembly Square Hole Dimension (mm)	Actuator Assembly Square Shaft Dimension (mm)	ISO Connection		Weight (kg)	Valve DN
							Valve	Actuator		
KST-010010	100	50	26:1	Ø180	14	14	F05/F07	F05/F07	2,6	DN40
KST-010020	215	60	30:1	Ø200	17	17	F07/F10	F07/F10	4	DN50
KST-010030	434	90	38:1	Ø280	22	22	F10/F12	F10/F12	6,5	DN65, DN80
KST-010040	1000	110	54:1	Ø300	27	27	F14	F12/F14	13	DN100, DN125
KST-010050	2000	140	80:1	Ø400	36	36	F16	F14/F16	32	DN150, DN200
KST-010060	3500	200	78:1	Ø500	46	46	F16	F16	43	DN250
KST-010070	4200	200	98:1	Ø600	55	55	Ø200	Ø200	65	DN300
KST-010080	6000	200	100:1	Ø600	55	55	F25	F25	95	DN350, DN400