

## Explosion Proof General Purpose Solenoid Valve SX1010 Series

### GENERAL FEATURES

- Wide pressure range, a flow rate and orifice options.
- Solenoid valves are used with the filter.
- Solenoid valves can be mounted in any position without affecting its operation.
- Coil to be used in a vertical position.

### ELECTRICAL CHARACTERISTICS

Voltages Tolerance : AC -15%, +10% DC -5%, +10%  
 Frequency : 50 Hz (60 Hz...)  
 Protection Degree : Atex II 2G Ex mb IIC T4 Gb / II 2D Ex t IIIC T135°C  
 Db IP67 ( On request IP68)

On request; Connector with LED, PWM Socket  
 Specify coil voltage with order.



**NORMALLY CLOSED**

**2/2 WAY**

**DIRECT ACTING**

$\Delta P=0$



### MATERIALS IN CONTACT WITH FLUID

Body : Brass  
 Internal Parts : Stainless Steel, Brass  
 Sealing : NBR on request ; EPDM, VITON  
 Shading Ring : Copper (EN 12735-1)  
 Seats, Core Tube, Springs: Stainless Steel

### MATERIALS IN CONTACT WITH FLUID

Body : Brass  
 Internal Parts : Stainless Steel  
 Sealing : NBR  
 (On request; EPDM, VITON, PTFE)  
 Shading Ring : Copper (EN 12735-1)  
 Seats, Core Tube, Springs : Stainless Steel

### OPTIONS

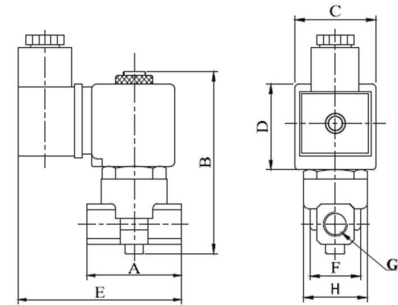
- Female connection: BSP; (On request NPT)  
 • On request CR-Ni plated, PTFE coated done

### TECHNICAL FEATURES

Max. Viscosity : 5°E (-37cST veya mm2/s)  
 Response Time : Opening time : 30 ms  
 Closing Time : 30 ms

### SEALS FEATURES

NBR : -20°C...+80°C  
 EPDM : -30°C...+130°C  
 VITON : -20°C...+160°C  
 PTFE : -10°C...+160°C  
 RUBY : -10°C...+160°C



Dimensions (mm)								
	G	A	B	C	D	E	F	H
1/8"	40	83	32	39	78	22,3	25,6	
1/4"	40	83	32	39	78	22,3	25,6	

Coils	Nominal Values	Cold/ Hot	Inrush	Holding	Current (A)	Surface Temperature (°C)
C40012VDC18W	12VDC 18W	COLD	19,56	19,56	1,63	20
		HOT	14,52	14,52	1,21	106
C40024VDC18W	24VDC 18W	COLD	20,88	20,88	0,87	25
		HOT	14,64	14,64	0,61	116
C40110VDC18W	110VDC 18W	COLD	19,96	19,96	0,18	23
		HOT	13,56	13,56	0,123	115
C40012VAC15VA	12VAC 15VA	COLD	23,81	16,43	1,3	25
		HOT	-	15,86	1,262	79
C40024VAC15VA	24VAC 15VA	COLD	25,82	15,02	0,62	22
		HOT	-	13,91	0,57	81
C40110VAC15VA	110VAC 15VA	COLD	30,65	15,17	0,137	24
		HOT	-	13,96	0,126	80
C40230VAC15VA	230VAC 15VA	HOT	31,4	15,64	0,068	25
		HOT	-	14,41	0,063	80
C40230VAC24VA	230VAC 24VA	COLD	45,1	23,92	0,0154	23
		HOT	-	21,62	0,0154	100

Solenoid Valve Symbol	Valve Type/ Order No	Connection Size	Orifice Size	Pressure min/max		KV	Seal				Weight
				Bar	Bar		l/min	NBR	Viton	EPDM	
	SX1010.00.018	1/8"	1,8	0	16	1,6	✓	✓	✓	✓	0,36
	SX1010.00.025	1/8"	2,5	0	12	3,2	✓	✓	✓	✓	0,36
	SX1010.00.030	1/8"	3	0	10	4,6	✓	✓	✓	✓	0,36
	SX1010.00.040	1/8"	4	0	9	6,4	✓	✓	✓	✓	0,36
	SX1010.00.050	1/8"	5	0	7	9,2	✓	✓	✓	✓	0,36
	SX1010.00.060	1/8"	6	0	5	11	✓	✓	✓	✓	0,36
	SX1010.01.018	1/4"	1,8	0	16	1,6	✓	✓	✓	✓	0,35
	SX1010.01.025	1/4"	2,5	0	12	3,2	✓	✓	✓	✓	0,35
	SX1010.01.030	1/4"	3	0	10	4,6	✓	✓	✓	✓	0,35
	SX1010.01.040	1/4"	4	0	9	6,4	✓	✓	✓	✓	0,35
SX1010.01.050	1/4"	5	0	7	9,2	✓	✓	✓	✓	0,35	
SX1010.01.060	1/4"	6	0	5	11	✓	✓	✓	✓	0,35	

**Not:** Please look catalogues for more details.

### STANDARDS

- Standard tube connection G (BSP) (ISO 228-1) and other tube connections (NPT (ANSI 1.20.3)) are available on request.
- TORK solenoid valves 97/23/EC, are available for pressure equipment directive (PED) and 2006/95/ECC low voltage directive (LVD).

## Explosion Proof General Purpose Solenoid Valve SX1010 Series

### GENERAL FEATURES

- Wide pressure range, flow rate and orifis options.
- Solenoid valvs are used with filters.
- Solenoid valves can be mounted in any position without affecting its operation, coil to be used in a vertical position.
- It is applicable for natural gas, lpg, methan, butane, propane, gas, noncorrosive gas. These are applicable for valve usage
- Operating Temperature: -20 °C / +160 °C
- No pressure difference is required.

### ELECTRICAL CHARACTERISTICS

Voltages Tolerance : AC -15%, +10% DC -5%, +10%  
 Frequency : 50 Hz (60 Hz...)  
 Protection Degree : Atex II 2G Ex mb IIC T4 Gb / II 2D Ex t III C  
 T135°C Db IP67 ( On request IP68)

On request; Connector with LED, PWM Socket  
 Specify coil voltage with order.

### MATERIALS IN CONTACT WITH FLUID

Body : Brass  
 Internal Parts : Stainless Steel, Brass  
 Sealing : NBR on request ; EPDM, VITON  
 Shading Ring : Copper (EN 12735-1)  
 Seats, Core Tube, Springs: Stainless Steel

### OPTIONS

- Female connection: BSP; (On request NPT)
- Manual use on request.
  - On request CR-Ni coating.
  - On request PTFE coating.

### TECHNICAL FEATURES

Max Viscosity : 5°E (-37cST veya mm ^2/s)  
 Response Time : Opening and Closing:  
 400-1600 ms

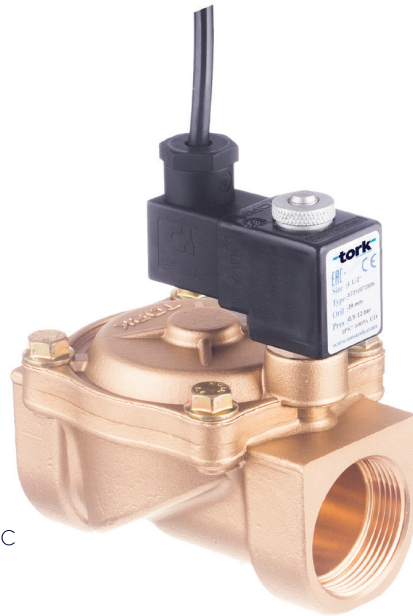
### SEALS FEATURES

NBR : -20°C...+80°C  
 EPDM : -30°C...+130°C  
 VITON : -20°C...+160°C  
 PTFE : -10°C...+160°C  
 RUBY : -10°C...+160°C

**Not:** Please look catalogues for more details.

### STANDARDS

- Standard tube connection G (BSP) (ISO 228-1) and other tube connections (NPT (ANSI 1.20.3)) are available on request.
- TORK solenoid valves 97/23/EC, are available for pressure equipment directive (PED) and 2006/95/ECC low voltage directive (LVD).



**NORMALLY CLOSED**

**2 WAY**

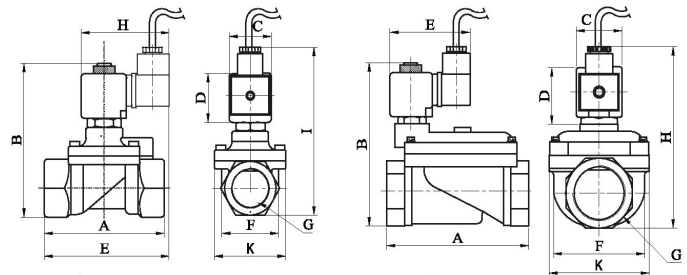
**PILOT OPERATED**

$\Delta P=0,5$



Dimensions (mm)									
G	A	B	C	D	E	F	K	H	I
3/8"	75	97	32	45	91.3	37.5	52	76	108
1/2"	79	100	32	45	92	39.5	52	76	110
3/4"	80	107.5	32	45	94	41.5	52	76	118
1"	85	115	32	45	101	42.5	52	76	124

Dimensions (mm)								
G	A	B	C	D	E	F	K	H
1 1/4"	141	143	32	45	73.4	96.5	110.7	156
1 1/2"	139	143	32	45	73.4	96.5	110.7	156
2"	145.6	153	32	45	73.4	96.5	110.7	165.5



Coils	Nominal Values	Cold/Hot	Inrush	Holding	Current (A)	Surface Temperature (°C)
C41012VDC18W	12VDC 18W	COLD	19,56	19,56	1,63	20
		HOT	14,52	14,52	1,21	106
C41024VDC18W	24VDC 18W	COLD	20,88	20,88	0,87	25
		HOT	14,64	14,64	0,61	116
C41110VDC18W	110VDC 18W	COLD	19,96	19,96	0,18	23
		HOT	13,56	13,56	0,123	115
C41012VAC15VA	12VAC 15VA	COLD	23,81	16,43	1,3	25
		HOT	-	15,86	1,262	79
C41024VAC15VA	24VAC 15VA	COLD	25,82	15,02	0,62	22
		HOT	-	13,91	0,57	81
C41110VAC15VA	110VAC 15VA	COLD	30,65	15,17	0,137	24
		HOT	-	13,96	0,126	80
C41230VAC15VA	230VAC 15VA	COLD	31,4	15,64	0,068	25
		HOT	-	14,41	0,063	80
C41230VAC15VA	230VAC 24VA	COLD	45,1	23,92	0,0154	23
		HOT	-	21,62	0,0154	100

Solenoid Vave Symbol	Valve Type/ Order No	Connection Size	Orifis Size	Pressure min/max		Kv	Seal			Weight
				Bar	Bar		NBR	VITON	EPDM	
	SX1010	G	mm	Bar	Bar	l/min	NBR	VITON	EPDM	kg
	SX1010.02	3/8"	12.5	0.5	16	48	✓	✓	✓	0,9
	SX1010.03	1/2"	14.5	0.5	16	70	✓	✓	✓	0,93
	SX1010.04	3/4"	17	0.5	16	85	✓	✓	✓	1,02
	SX1010.05	1"	17	0.5	16	90	✓	✓	✓	1,2
	SX1010.06	1 1/4"	30	0.5	16	390	✓	✓	✓	2,87
	SX1010.07	1 1/2"	39	0.5	16	460	✓	✓	✓	2,77
	SX1010.08	2"	46	0.5	16	580	✓	✓	✓	3,2

## Explosion Proof General Purpose Solenoid Valve SX1011 Series

### GENERAL FEATURES

- Wide pressure range, flow rate and orifis options.
- Solenoid valves are used with filters.
- Solenoid valves can be mounted in any position without affecting its operation, coil to be used in a vertical position.
- It is applicable for natural gas, lpg, methan, butane, propane, gas, noncorrosive gas. These are applicable for valve usage
- Operating Temperature: -10 °C / +160 °C
- No pressure difference is required.

### ELECTRICAL CHARACTERISTICS

Voltages Tolerance : AC -15%, +10% DC -5%, +10%  
 Frequency : 50 Hz (60 Hz...)  
 On request; Connector with LED, PWM Socket  
 Specify coil voltage with order.

### MATERIALS IN CONTACT WITH FLUID

Body : Brass  
 Internal Parts : Stainless Steel, Brass  
 Sealing : NBR on request ; EPDM, VITON  
 Shading Ring : Copper (EN 12735-1)  
 Seats, Core Tube, Springs: Stainless Steel

### OPTIONS

- Female connection: BSP; (On request NPT)
- Manual use on request.
  - On request CR-Ni coating.
  - On request PTFE coating.
  - On request Atex (exproof) coil.

### TECHNICAL FEATURES

Max Viscosity : 5°E (-37cST veya mm ^2/s)  
 Response Time : Opening and Closing:  
 400-1600 ms

### SEALS FEATURES

NBR : -10°C...+80°C  
 EPDM : -10°C...+130°C  
 VITON : -10°C...+160°C  
 PTFE : -10°C...+160°C  
 RUBY : -10°C...+160°C



NORMALLY OPEN

2 WAY

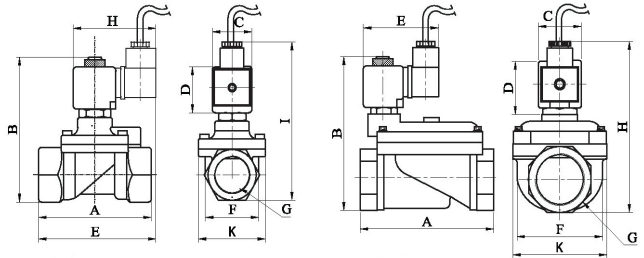
PILOT OPERATED

ΔP=0,5



Dimensions (mm)										
	G	A	B	C	D	E	F	K	H	I
3/8"	75	97	32	45	91.3	37.5	52	76	108	
1/2"	79	100	32	45	92	39.5	52	76	110	
3/4"	80	107.5	32	45	94	41.5	52	76	118	
1"	85	115	32	45	101	42.5	52	76	124	

Dimensions (mm)									
	G	A	B	C	D	E	F	K	H
1 1/4"	141	143	32	45	73.4	96.5	110.7	156	
1 1/2"	139	143	32	45	73.4	96.5	110.7	156	
2"	145.6	153	32	45	73.4	96.5	110.7	165.5	



Coils	Nominal Values	Cold/ Hot	Inrush	Holding	Current (A)	Surface Temperature (°C)
C41012VDC18W	12VDC 18W	COLD	19,56	19,56	1,63	20
		HOT	14,52	14,52	1,21	106
C41024VDC18W	24VDC 18W	COLD	20,88	20,88	0,87	25
		HOT	14,64	14,64	0,61	116
C41110VDC18W	110VDC 18W	COLD	19,96	19,96	0,18	23
		HOT	13,56	13,56	0,123	115
C41012VAC15VA	12VAC 15VA	COLD	23,81	16,43	1,3	25
		HOT	-	15,86	1,262	79
C41024VAC15VA	24VAC 15VA	COLD	25,82	15,02	0,62	22
		HOT	-	13,91	0,57	81
C41110VAC15VA	110VAC 15VA	COLD	30,65	15,17	0,137	24
		HOT	-	13,96	0,126	80
C41230VAC15VA	230VAC 15VA	COLD	31,4	15,64	0,068	25
		HOT	-	14,41	0,063	80
C41230VAC15VA	230VAC 24VA	COLD	45,1	23,92	0,0154	23
		HOT	-	21,62	0,0154	100

Solenoid Valve Symbol	Valve Type/ Order No	Connection Size	Orifis Size	Pressure min/max		Kv	Seal			Weight
				Bar	Bar		NBR	VITON	EPDM	
	SX1011	G	mm	Bar	Bar	l/min				
	SX1011.02	3/8"	12.5	0.5	12	48	✓	✓	✓	0,91
	SX1011.03	1/2"	14.5	0.5	12	70	✓	✓	✓	0,94
	SX1011.04	3/4"	17	0.5	12	85	✓	✓	✓	1,03
	SX1011.05	1"	17	0.5	12	90	✓	✓	✓	1,2
	SX1011.06	1 1/4"	46	0.5	12	390	✓	✓	✓	2,88
	SX1011.07	1 1/2"	46	0.5	12	460	✓	✓	✓	2,78
	SX1011.08	2"	46	0.5	12	580	✓	✓	✓	3,21

Not: Please look catalogues for more details.

### STANDARDS

- Standard tube connection G (BSP) (ISO 228-1) and other tube connections (NPT (ANSI 1.20.3)) are available on request.
- TORK solenoid valves 97/23/EC, are available for pressure equipment directive (PED) and 2006/95/ECC low voltage directive (LVD).