

Big & Small Magnetic Locks S9110 - 9170 Series

GENERAL FEATURES

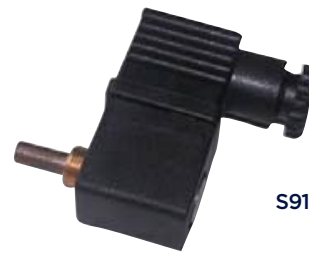
- Tork series S9110 and S9170 series big and small magnetic locks are special designed
- Especially used on automatic locking systems
- Compact and low weight valve enabling easy and quick installation
- Coils interchangeable
- Low coil power (5.5 W for DC, 6-8,5 VA for AC) and current (for S9170)

ELECTRICAL CHARACTERISTICS (for S9110)

Continuous Duty	: ED %100
Coil Insulation Class	: H (180°C)
Coil Impregnation	: Polyester Fiber Glass
Coil Encapsulation Material	: Fiber Glass Reinforced
Ambient Temperature	: from -10°C, +60°C
Protection Degree	: IP65 (ISO 60529) with coil duly fitted with the plug connector
Electric Plug Connection	: DIN 46340 3- Poles Connector (DIN43650)
Connector Specification	: ISO 4400 / EN 175301-803 Form A, Spade Plug (Cable Ø6-8 mm)
Electrical Safety	: IEC 335
Standard Voltages	: For AC 12V, 24V, 48V, 110V, 230V For DC 12V, 24V, 48V, 110V
On request other voltages	
Voltages Tolerance	: AC -15%, +10% DC -5%, +10%
Frequency	: 50 Hz, other frequencies on request; (60Hz)
On request; Connector with LED, Specify coil voltage with order	



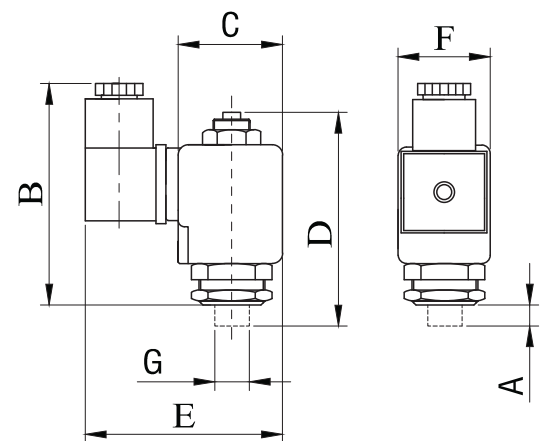
S9110 (Big Magnetic Lock)



S9170 (Small Magnetic Lock)

MATERIALS IN CONTACT WITH FLUID

Internal Parts	: Stainless Steel, Brass
Shading Ring	: Copper
Core Tube	: Stainless Steel, Brass
Springs	: Stainless Steel



Dimensions (mm)

	B	C	D	E	F	
12.85	4	50	39	66.5	76	32
12.85	8	50	39	66.5	76	32

Valve Type / Order No	Power	Stroke	Voltage	Weight
S9110 / S9170	W	mm	V	(kg)
S9110.080	10	4 or 8	All Voltages	0.1
S9170.041	5	4.1	All Voltages	0.45

Useful Informations

1 bar: 14,5 PSI: 10 mH₂O: 10 N/cm²: 1 kg/cm²: 100000 Pa, 1 PSI: 69 mbar, 1 m³/h: 4,405 GPM: 16,7 L/d 1 Gallon / minute: 0,227 m³/h, 0°C: 89,6 F