

DRAIN SOLENOID VALVES

Pilot Operated G3/8", G1/2", G3/4", G1"

NORMALLY CLOSED

2/2 WAY



GENERAL FEATURES

- TORK series S8180 (N.C) diaphragm drain solenoid valves are 2/2 way normally closed pilot operated
- The standby and drainage periods can be regulated by the timer on itself. It is attached to the part of the valve which it is drained. The valve is opened to drain on time which the timer is programmed.
- On request; normally open types
- Suitable for non-aggressive liquids (water, light oil (2E) etc ...), gaseous fluids (air, inert gases etc ...)
- Working Temperature:-10 C / +80 C
- Not suitable for use with dangerous fluids listed in Group 1
- Don't require differential pressure (for 3/8", 1/2", 3/4", 1")
- Internal exhaust system for normally open solenoid valves
- High reliability, quality and performance; long life, corrosion resistance
- Wide pressure ratings, range of flow rate and orifice options
- Ideal for the automatic control of media in a wide range of applications.
- TORK solenoid valves satisfy relevant 97 /23/EC, Pressure Equipment Directive (PED) and 2006/95/EEC Low Voltage Directive (LVD).
- Some applications; separator main drainage
- Coils interchangeable
- Flow factor Kv of each valve is indicated, so that the flow Q can be calculated as a function of pressure
- Solenoid valves must be used with filtered fluids.
- Solenoid valve can be mounted in any position without affecting operation; vertical with coil upwards preferred.
- Standard pipe connection is G (BSP) (ISO 228-1) and on request; other pipe connections are available (NPT (ANSI 1.20.3))



ELECTRICAL CHARACTERISTICS

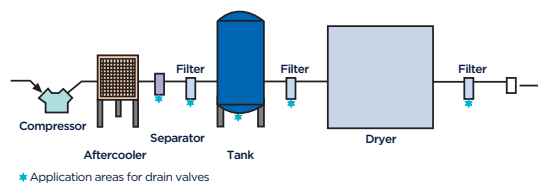
Continuous Duty	: ED %100
Coil Insulation Class	: H (180°C)
Coil Impregnation	: Polyester Fiber Glass
Ambient Temperature	: -from -10°C; +60°C
Protection Degree	: IP 65 (EN 60529) with coil duly fitted with the plug connector
Electric Plug Connection	: DIN 46340 3-poles connectors (DIN 43650)
Connector Specification	: ISO 4400 / EN 175301-803, Form A, Spade plug (Cable 06-8 mm)
Electrical Safety	: IEC 335
Standard Voltages	: For AC 12V, 24V, 48V, 110V, 230V For DC 12V, 24V, 48V, 110V
Other voltages on request;	
Voltage Tolerances	: For AC -15%; + 10%, For DC -5%; + 10%
Voltage Tolerances	: 50 Hz, other frequencies on request; (60 Hz)

On request; connector with LED Specify coil voltage with order

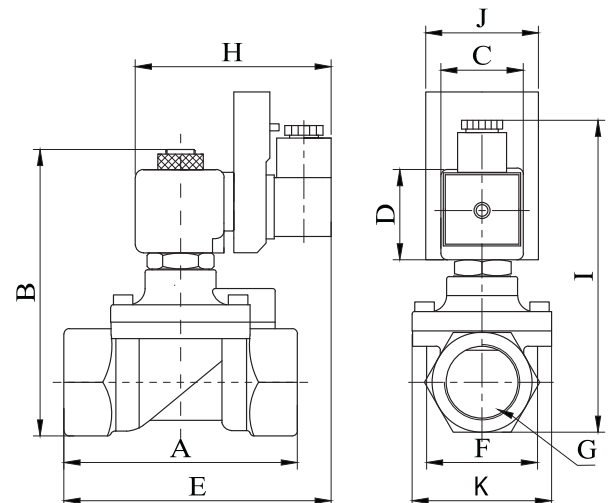
MATERIALS IN CONTACT WITH FLUID

Body	: Brass
Internal Parts	: Stainless Steel
Sealing	: NBR
Shading Ring	: Copper
Seats	: Brass
Core Tube	: Brass
Springs	: Stainless Steel
Shading Ring	: Stainless Steel

On request; sealing can be FPM (VITON),EPDM



* Application areas for drain valves



Dimensions (mm)										
	G	A	B	C	D	E	F	K	H	J
3/8"	74	97	32	45	109.3	37.5	52	76	108	42.3
1/2"	79	100	32	45	110	39.8	52	76	110	42.3
3/4"	79	107.3	32	45	112	39.8	52	76	118	42.3
1"	85	115	32	45	115	42.5	52	76	124	42.3

TECHNICAL FEATURES

Continuous Duty	: 5°E (-37cSt or mm2/s)
Response Time	: Opening Time: 400 ms to - 1600 ms, Closing Time :1000 ms to - 2000 ms

Solenoid Valve Symbol	Valve Type/Order No	Connection Size	Orifice Size	Pressure min/max	Kv	Fluid Temperature °C	Seal	Weight		
	S8180	G	mm	Bar	Bar	lt/min	min	max	kg	
 S8180 (N.C)	S8180.02	3/8"	12.5	0,15	16	48	-10	80	NBR	0.69
	S8180.03	1/2"	14.5	0,15	16	70	-10	80	NBR	0.72
	S8180.04	3/4"	17	0,15	16	85	-10	80	NBR	0.8
	S8180.05	1"	17	0,15	16	90	-10	80	NBR	0.98

Useful Informations

1 bar:14,5 PSI;10 mH20:10 N/cm2;1 kg/cm2:100000 Pa , 1 PSI:69 mbar;1 m3/h:4,405 GPM;16,7 L/d 1 Gallon / minute:0,227 m3/h, 0°C:89,6 F Sealings:NBR:Nitrile-Butylene Elastomer , FPM (VITON):Fluoro Carbon Elastomer, EPDM:Ethylene-Propylene Elastomer