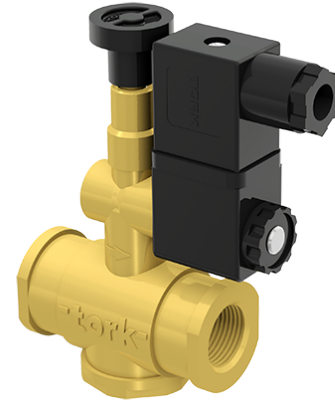


NATURAL GAS MANUAL CONTROL SOLENOID VALVE S8018 SERIES

NORMALLY OPEN

2/2 WAY

$\Delta P=0$



GENERAL FEATURES

- Wide pressure range, a flow rate and orifice options.
- Solenoid valves are used with the filter.
- Solenoid valves can be mounted in any position without affecting its operation; coil to be used in a vertical position.
- S8018 Series Natural Gas Manual Control Solenoid Valve is normally open.
- Suitable for natural gas, lpg, methane, butane, propane, city gas, air, non-corrosive gases, which are compatible with the usage structure of the valve.
- Operating temperature -10°C / +80°C
- No pressure difference is required.

TECHNICAL FEATURES

Application	: Natural gas, lpg
Usage Areas	: It is connected to the entrance of the building, workplace, workshop, factory in natural gas lines.
Size	: 1/2", 3/4"
Working Pressure	: 0 bar 6 bar
Tube, Core	: Stainless Steel, Brass
Body	: Brass
Diaphragm	: NBR
Operating Temperature	: -15° C...60° C
Position	: Normally Open
Coil Voltage	: 230V AC, 110 V, 24 V, 12V AC/DC, (IP 65 ve Ex-proof)

ELECTRICAL CHARACTERISTICS

Continuous Duty	: %100
Coil Insulation Class	: H (180°C)(IEC 85)
Coil Impregnation	: Güçlendirilmiş Fiber Glass
Ambient Temperature	: -10°C, +60°C
Protection Degree	: IP65 (ISO 60529)
Poles Connector	: DIN 46340 3-kutuplu Soket (DIN 43650)
Electrical Safety	: IEC 335
Standard Voltages	: AC 7,1 VA 12V, 24V, 48V, 110V, 230V, 230V DC 5W 12V, 24V, 48V, 110V
Voltages Tolerance	: AC -10%, +10% DC -5%, +10%
Frequency	: 50 Hz (60 Hz...)

On request; socket with LED
Please give coil voltage in orders.
See the coil section for detailed information.

MATERIALS IN CONTACT WITH FLUID

Body	: Brass
Internal Parts	: Brass
Sealing	: NBR
Shading Ring	: Bakır (EN 12735-1)
Seats, Core Tube, Springs	: Stainless Steel, Brass

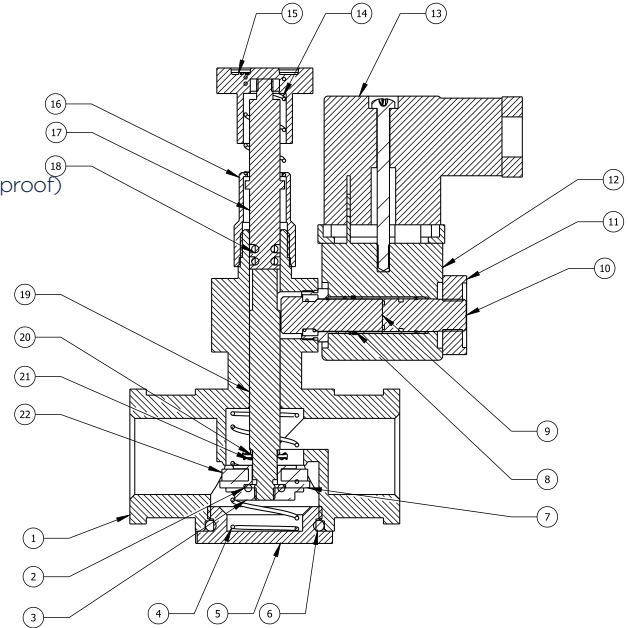
OPTIONS

Female connection : On request NPT

- On request Atex (exproof) coil.

TECHNICAL FEATURES

Max. Viscosity	: 5°E (-37cST or mm2/s)
Response Time : Opening time	: 30 ms
Closing Time	: 30 ms



No	Part Name	Pieces
1	Body	1
2	Orifice O-ring	1
3	Nut	1
4	Lower cap spring	1
5	Lower cap	1
6	Cap o-ring	1
7	Orifice sealing hodlder	1
8	Core spring	1
9	Core	1
10	Plunger	1
11	Coil Nut	1

No	Part Name	Pieces
12	Coil	1
13	Connector	1
14	Controller Spiring	1
15	Hand Knob	1
16	Shaft stopper	1
17	Setting shaft	1
18	Setting Shaft O-ring	2
19	Diaphragm holding shaft	1
20	Ring	1
21	Lock washer	1
22	Diaphragm	1

NATURAL GAS MANUAL CONTROL SOLENOID VALVE S8018 SERIES

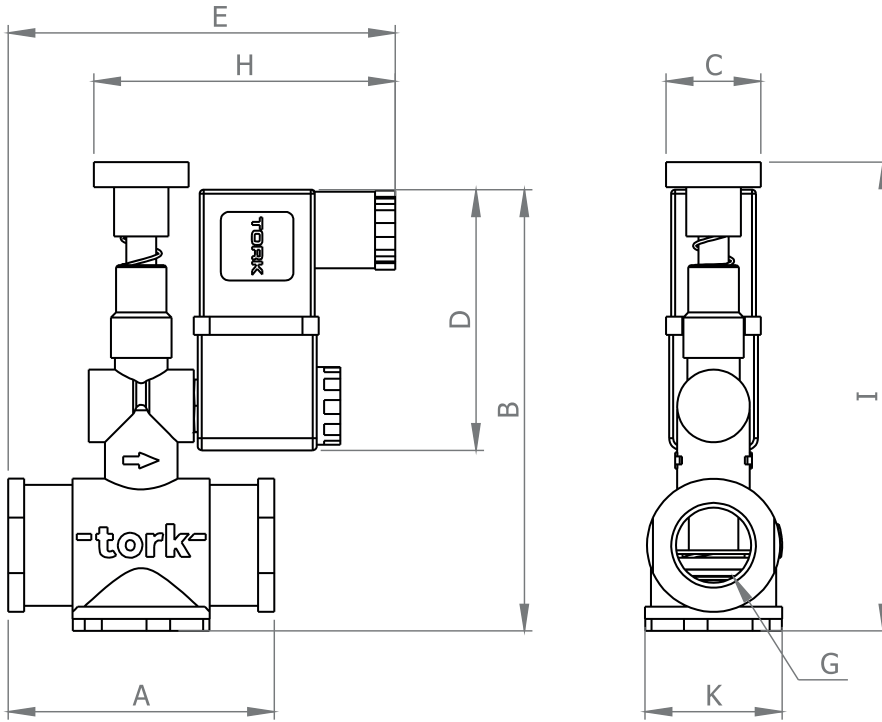
NORMALLY OPEN

2/2 WAY

$\Delta P=0$



TECHNICAL FEATURES



Sizes (mm)

G	A	B	C	D	E	H	I	K
1/2"	66	109.40	Ø23,50	64,60	96	74,75	116,3	Ø34
3/4"	66	109.40	Ø23,50	64,60	96	74,75	116,3	Ø34

Solenoid Valve Symbol	Valve Type/ Order No	Connection Size	Orifice Size	Pressure min/max		Kv	Sealing		Weight kg
				Bar	Bar		Viton	Option NBR EPDM	
	S8018	G	mm	Bar	Bar	lt/min			
	S8018.03	1/2"	19	0	6	110	✓		0,49
	S8018.04	3/4"	19	0	6	110	✓		0,49