

General Purpose Solenoid Valves S1068 Series (G1/8")

General Features:

- Solenoid valves are used with filters.
- Solenoid valves can be mounted in any position without affecting its operation.
- Coil to be used in a vertical position.

Electrical Characterist:

Continuous Duty	:ED %100
Coil Insulation Class	:H (180°C)(IEC 85) B
Coil Impregnation	:Polyester Fiber Glass
Coil Outer Body Material	:Fiber Glass Reinforced
Ambient Temperature	:-20°C, +55°C
Protection Degree	:IP65
Electric Plug Connection	:No plug, cable type coil (with 370 mm length cable)
Electrical Safety	:IEC 335
Standard Voltages	:24V DC 9W
Voltage Tolerance	:±10%
On request	:Connector with LED

Materials in Contact with Fluids

Body	:Brass
Internal Parts	:Stainless Steel, brass
Sealing	:Viton
Shading Ring	:Copper

Options:

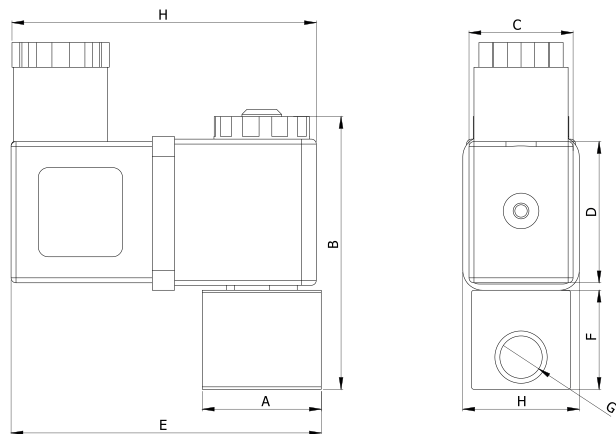
Female connections:	:BSP (on request NPT) On request Atex (exproof) coil
---------------------	---

Technical Features:

Max Viscosity	:5°E (-37 cSt or mm ² /s)
Response Time	:Opening & Closing Time 30 ms
Fluid Temperature	:-10°C to +160°C

Seal Features:

VITON	: -10°C / +160°C
-------	------------------



Dimensions (mm)

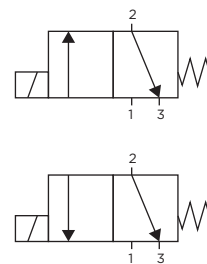
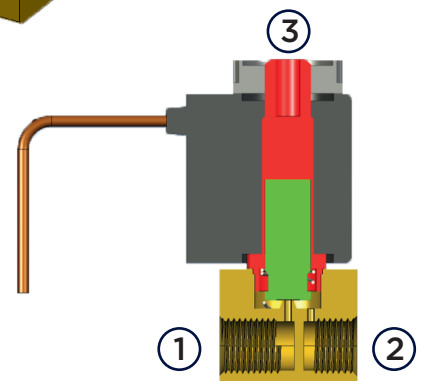
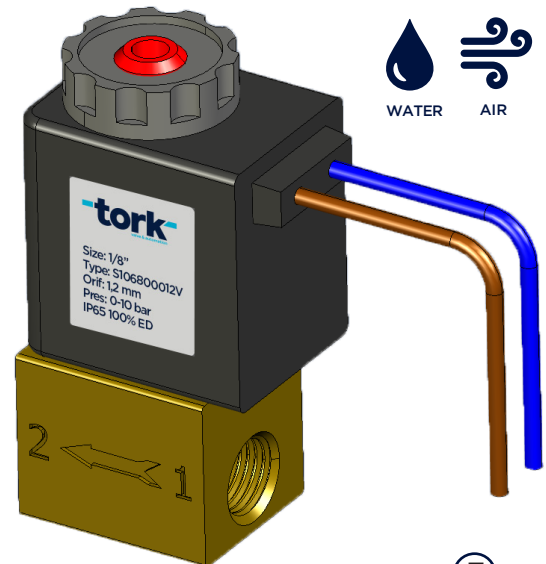
G	A	B	C	D	E	F	H
1/8	24	57	22	29,5	33	20	20

NORMALLY CLOSED

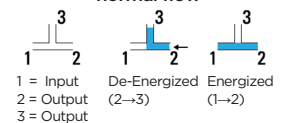
3 WAY

DIRECT ACTING

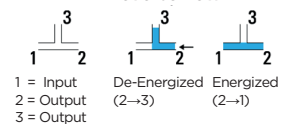
ΔP=0



normal flow



reverse flow



Solenoid Valve Symbol	Valve Type/ Order No	Connection Size	Orifice Size	Pressure		Kv	Seal	Weight
				min	max			
	SS1068	G	mm	Bar	Bar	Lt/min	VITON	kg
	S106800012V	1/8"	1,2	0	10 (normal flow) 10 (reverse flow)	0,8	✓	0,14

STANDARDS

- Standard tube connection G (BSP) (ISO 228-1) and other tube connections (NPT) (ANSI 1.20.3) are available on request.
- TORK solenoid valves 97/23/EC, are available for pressure equipment directive (PED) and 2006/95/ECC low voltage directive (LVD).

Not: Please look catalogues for more details