

PNEUMATIC ACTUATED CARBON STEEL BALL VALVES

(CARBON STEEL PAV-907F.DA/SR,
NATURAL GAS CARBON STEEL PAV-912F.DA/SR)



Ball Valve Details

Body	: GS C25 (DN15-DN100) - ST 37 (DN125 - DN200)
Ball	: AISI 430
Head Flange	: ISO5211
Working Pressure	: Natural Gas Valve; PN40 Carbon Steel Valves; Class 150 ve Class 300 ops.
Connections	: EN 1092-1
Way	: 2/2
Certificate	: Natural Gas Valve; TS EN 10204 3.1 Carbon Steel Valves; CE0036, TS EN 10204 3.1
Sizes	: DN15 DN200
Application	: Carbon Steel Valves; Hot Water, Cold Water, Pressures Air, Fuel Oil Natural Gas Valve; Natural Gas, LPG, LNG, Pressures Gas, Other Gases
Sealing	: PTFE

Pneumatic Actuator Details

Type	: Single Acting, Double Acting
Position	: 2 Positions, 3 Positions
Angle of Rotation	: 90°, 120°, 180°
Protection Class	: IP65, IP68
ATEX Protection Class	: II 2GDc T4
Working Pressure	: 4...8 Bar
Working Temperature	: -10°C...+80°C (-50°C...80°C)
Torque Range	: 9Nm...5162 Nm
Body	: Aluminium Extrusion
Strok Adjustment	: ± 5°
Accessories	: Switch Box, Namur Valve, Positioner, Manual Override
Fluid Control	: On/Off, Proportional
Valve Connection	: ISO 5211
Accessories Connections	: Namur standards

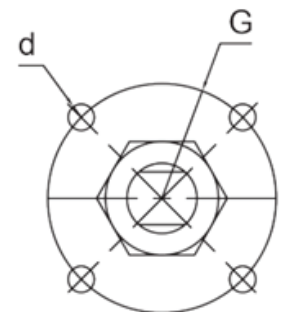
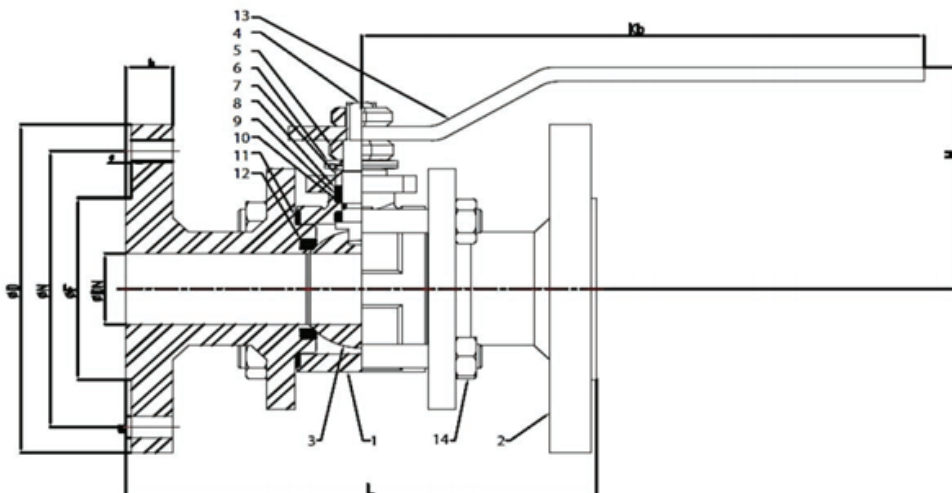
▶ VALVE SIZE

Natural Gas Ball Valve Sizes

SIZE	DIMENSIONS				CONNECTION SIZES PN16						CONNECTION SIZES PN40						ACTUATOR CONNECTIONS		
	DN	Kb	H	F	f	L	D	b	M	N	MN	L	D	b	M	N	MN	G	d
DN 15	130	160	35	2	108	90	11	16	60	4	140	95	14	16	67	4	36	M5	2,8
DN 20	150	160	43	2	117	100	13	16	70	4	152	115	16	19	83	4	36	M5	3,8
DN 25	160	180	51	2	127	110	14	16	80	4	165	125	18	19	89	4	42	M5	5
DN 32	180	215	64	2	140	115	16	16	89	4	180	135	19	19	98	4	42	M5	7
DN 40	200	215	73	2	165	125	16	16	98	4	190	155	21	22	114	4	50	M6	9,5
DN 50	230	295	92	2	178	150	19	19	121	4	216	165	22	19	127	8	50	M6	13
DN 65	290	295	105	2	190	180	22	22	140	4	241	190	25	22	149	8	70	M8	20
DN 80	310	400	127	2	203	190	22	22	152	4	283	210	28	22	168	8	70	M8	26,5
DN 100	350	400	157	2	229	230	24	24	191	8	305	255	32	22	200	8	102	M10	42
DN 125	400	245	186	2	356	255	25	25	216	8	381	280	34	22	235	8	102	M10	50
DN 150	600	265	216	2	394	280	25	25	241	8	403	320	36	22	270	12	125	M12	79
DN 200	850	270	270	2	457	345	29	29	298	8	502	380	41	22	330	12	125	M12	180

Carbon Steel Ball Valve Sizes

SIZE	DIMENSIONS					CONNECTION SIZES PN16						ACTUATOR CONNECTIONS		
	DN	L	Kb	H	f	D	b	N	M	F	MN	G	d	Kg
DN 15	130	160	70	2	95	16	65	14	45	4	36	M5	2,8	
DN 20	150	160	75	2	105	18	75	14	58	4	36	M5	3,8	
DN 25	160	180	85	2	115	18	85	14	68	4	42	M5	5	
DN 32	180	215	100	2	140	18	100	18	78	4	42	M5	7	
DN 40	200	215	115	2	150	18	110	18	88	4	50	M6	9,5	
DN 50	230	295	125	3	165	20	125	18	102	4	50	M6	13	
DN 65	290	295	145	3	185	22	145	18	122	8	70	M8	20	
DN 80	310	400	155	3	200	24	160	18	138	8	70	M8	26,5	
DN 100	350	400	170	3	235	24	190	22	162	8	102	M10	42	
DN 125	400	400	245	3	270	26	220	26	188	8	102	M10	50	
DN 150	350	600	265	3	300	28	250	26	218	8	125	M12	79	
DN 200	400	850	330	3	375	34	320	30	285	12	125	M12	180	



ACTUATOR CONNECTION

▶ BALL VALVE MATERIALS

NO	PART NAME	STAINLESS STEEL VALVE	
		I.C. GS C25	S.P. ST 37
1	BODY	DN 15 - DN 100	DN 125 - DN 200
		I.C. GS C25 S.P. ST 37	S.P. ST 37
2	CAP	DN 15 - DN 100	DN 125 - DN 200
		AISI 430	
3	BALL	AISI 430	
4	BALL SHAFT	AISI 430	
5	NUT	8.8 STEEL	
6	STAMP	STAINLESS	
7	RING	STEEL	
8	NECK GASKET	PTFE	
9	SHAFT STEEL RING	STEEL	
10	O-RING	VITON	
11	BALL GASKET	PTFE	
12	VALVE HANDLE	ST37 COATED	
13	NUT	Ç 4140	

I.C.: INVESTMENT CASTING S.P.: STEEL PRODUCTION

Ball Valve Code

: Carbon Steel Ball Valve Sizes; Tork-KV.907F
Natural Gas Ball Valve; Tork-KV.912F

Single Acting Actuated Ball Valve Code

: Carbon Steel Ball Valve Sizes; Tork-PAV.907F.SR
Natural Gas Ball Valve; Tork-PAV.912F.SR

Double Acting Actuated Ball Valve Code

: Carbon Steel Ball Valve Sizes; Tork-PAV.907F.DA
Natural Gas Ball Valve; Tork-PAV.912F.DA