

LS50 ARCTIC ENVIRONMENT LIMIT SWITCH BOX (-50°C...70°C)

Purpose Of Use

The arctic environment limit switch box is a device used to visually indicate the position of pneumatic rotary actuators in the temperature range of -50°C...70°C and to give output signals according to the position of the valve.

Technical Featured

- on off and continuous visual valve position indicator
- Compact small body
- IP67,
- Aluminum body
- Electrostatic powder paint
- Double cable entry, NPT 1/2", M20 (Optional)
- Easy assembly according to NAMUR standard
- Stainless steel shaft and bracket
- Mechanical switch that can operate in cold environments between -50°C..70°C.

For Exproof Models;

- ExProof, II 2G Ex d IIC T4 Gb,
II 2D Extb IIIC TMax 95°C Db
- IP66



Mechanical Switch Function



MODEL	C&K, TMCJG6ST1540C
Switch Function	Mechanical, Single Contact Double Direction
Switch Function	RU
Nominal Values	15 A, 250 VAC
Operating Temperature	-55°C + 150°C

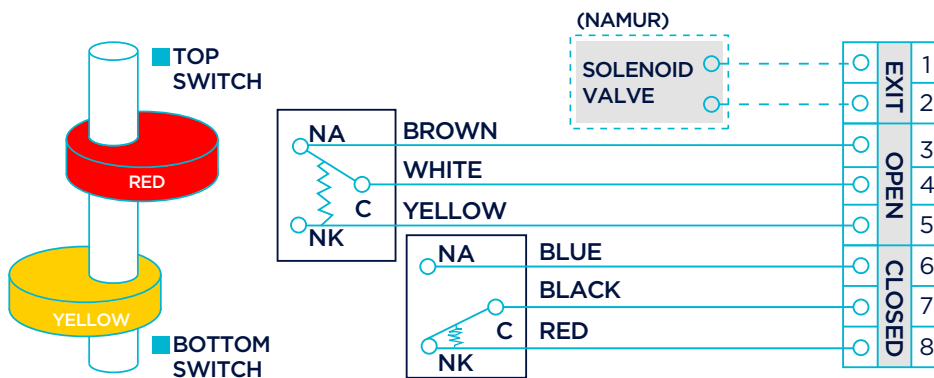
**LS50 ARCTIC ENVIRONMENT
LIMIT SWITCH BOX**

Connection Diagram



**-50°C...+70°C
WORKING**

MECHANICAL SWITCH



Sizes

