

Type K61

DN 15 - 300
PN 16 - 40

Globe Valve

Butt-Welded, Flanged

Data Sheet

Edition: EN 9 / 2015

© MPOWER Engineering, a.s.
Pod vinicí 2028/20, Modřany, 143 00 Praha 4, CZ
T: +420 225 371 300, F: +420 225 371 325
E: info@mpowergroup.eu, W: www.mpowergroup.eu

together we are strong
www.mpowergroup.eu

Content

Application3
Technical description3
Installation.....3
Testing3
Operation.....3
Connection.....3
Materials of main parts3
Dimensions4
Operating data5

Copyright

All rights reserved. No content provided herein may be copied, distributed or otherwise reproduced without previous written approval of the company MPOWER Engineering, a.s.

© MPOWER Engineering, a.s., Praha 2015

Contact

MPOWER Engineering, a.s.
Pod viničí 2028 / 20
143 00 Praha 4 – Modřany, CZ

T: +420 225 371 300
F: + 420 225 371 325
E: info@mpowergroup.eu
W: www.mpowergroup.eu



Application

- Designed for closing or throttling the liquid and gaseous medium
- **Fluids**
Water, steam, air, crude petroleum and petroleum products, natural gas, gas condensate, technological solutions, oxygen, liquid and non-aggressive gases
- **Industry**
Power engineering, chemical and petrochemical industry

Technical description

- Stem is rotating, rising
- Valve opening is provided slowly, with gradual suspension of the stroke, to prevent hydraulic and thermal shocks in the valve
- Shutt-off valves can be operated in position open-close, throttling valve can be operated also in an intermediate position

Installation

- The valves may be installed in any position, direction of the flow is under the plug

Testing

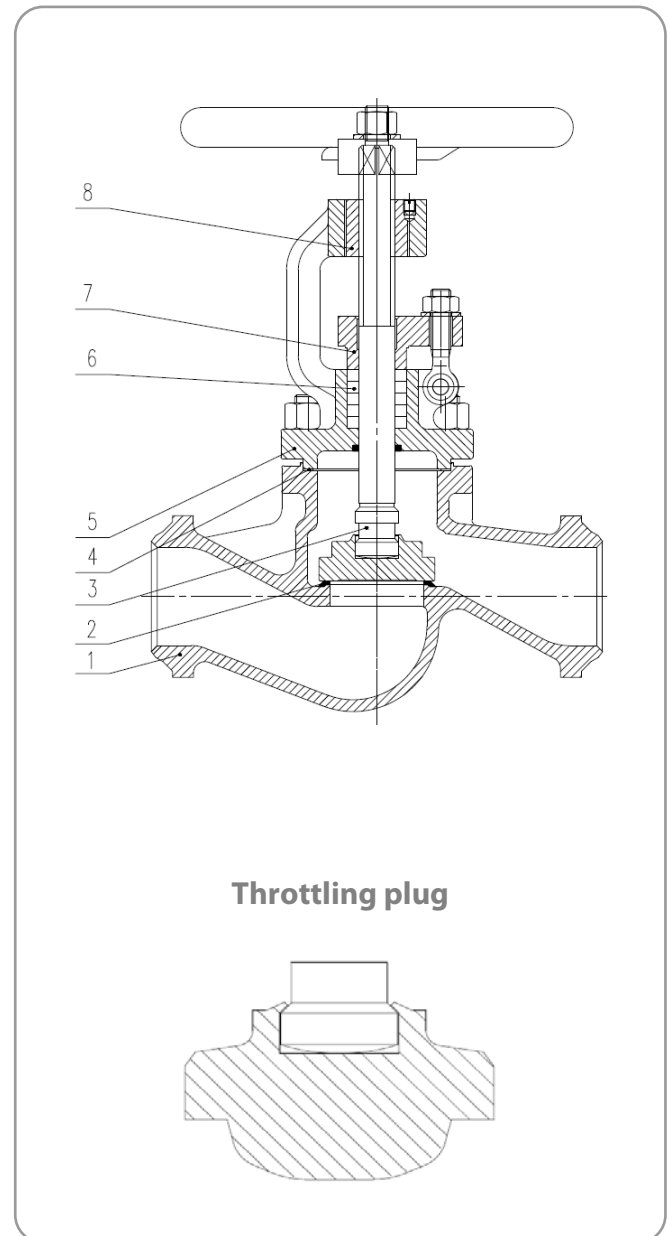
- The valves are pressure tested with water for strength and tightness in accordance with working parameters and material of body according to EN-12266
- The minimum pressure for the strength testing is 1,5 x PN

Operation

- Hand wheel (with locking device, if required)
- Electric actuator
- Gear box
- Flange ISO 5210 (ready for actuator)

Connection

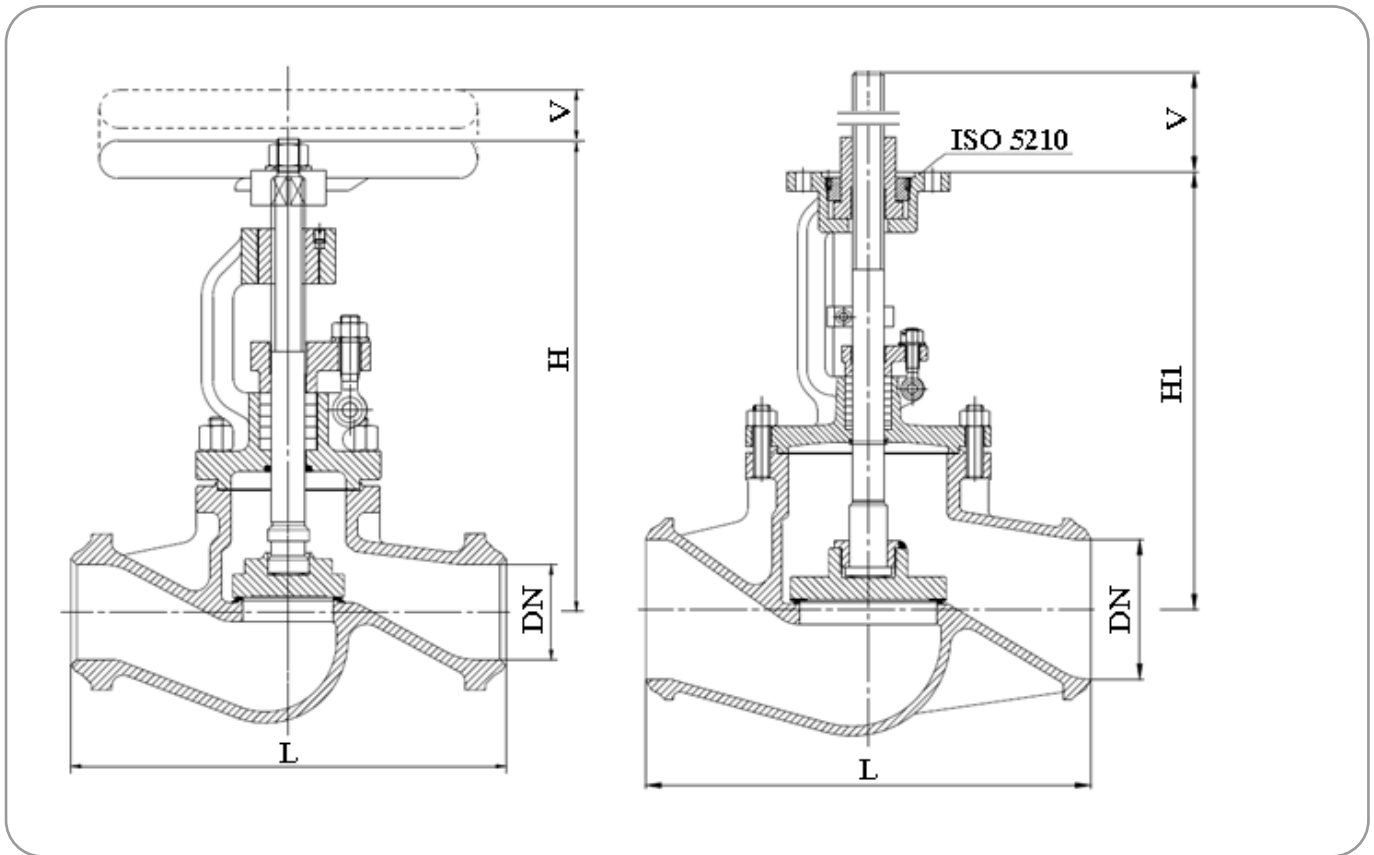
- Butt-welded according to EN-12627, flanged according to EN1092-1 or to customer request
- Face to face dimensions according to EN-558-1



Materials of main parts

Pos.	Name	Material
1	Body	1.0619 (A216 WCB), 1.7357 (A217 WC6), 1.4408 (A351 CF8M)
2	Seat	13Cr, Stellite 6
3	Stem	F316, X20Cr13
4	Gasket	Graphite + stainless steel
5	Bonnet	1.0619 (A216 WCB), 1.7357 (A217 WC6), 1.4408 (A351 CF8M)
6	Packing	Graphite
7	Gland	1.0619 (A216 WCB), 1.7357 (A217 WC6), 1.4408 (A351 CF8M)
8	Stem nut	GGG40.3

Dimensions



DN	PN	L mm	H mm	V mm	H1 mm	ISO 5210	Torque Nm	Weight kg	
								FL	BW
15	16 25/40	130	176	13	188	F7	11	3,6	2,1
20		150	185	13	188	F7	15	5,2	3,8
25		160	205	16	200	F10	18	6,8	5,1
32		180	220	18	207	F10	20	8,5	5,7
40		200	235	23	227	F10	24	12	8,4
50		230	246	26	244	F10	30	16	12
65	16	290	289	28	284	F10	51	22	18
80		310	315	33	300	F10	84	30	25
100		350	352	37	359	F14	145	39	31
125		400	420	51	417	F14	322	58	49
150		480	475	65	467	F14	350	80	69,5
200		600	545	65	584	F16	630	167	153
250		730	670	87	684	F25	1150	240	222
300		850	710	114	753	F30	2050	340	315
65	25/40	290	289	28	284	F10	51	23	19
80		310	315	33	300	F10	84	33	27
100		350	352	37	359	F14	145	45	36
125		400	420	51	417	F14	322	67	54
150		480	475	65	467	F14	350	87	72

DN	PN	L mm	H mm	V mm	H1 mm	ISO 5210	Torque Nm	Weight kg	
								FL	FL
200	25	600	545	65	584	F16	630	180	160
250		730	670	87	684	F25	1150	262	237
300		850	710	114	753	F30	2050	372	337
200	40	600	545	65	584	F16	630	189	167
250		730	670	87	684	F25	1150	287	260
300		850	710	114	753	F30	2050	397	355

Operating data

Material	PN	Working pressure MPa / Working temperature °C													
		100	150	200	250	300	350	400	425	450	500	525	550	575	595
1.0619 (A216 WCB)	16	1,46	1,43	1,38	1,32	1,22	1,17	1,09	-	-	-	-	-	-	-
	25	2,29	2,23	2,16	2,06	1,91	1,82	1,70	-	-	-	-	-	-	-
	40	3,66	3,57	3,46	3,29	3,06	2,92	2,72	-	-	-	-	-	-	-
1.4408 (A351 CF8M)	16	1,33	1,20	1,10	1,02	0,96	0,91	0,87	0,86	0,86	0,83	-	-	-	-
	25	2,07	1,87	1,72	1,60	1,50	1,42	1,36	1,35	1,34	1,30	-	-	-	-
	40	3,32	2,99	2,75	2,56	2,41	2,27	2,18	2,16	2,14	2,08	-	-	-	-
1.7357 (A217 WC6)	16	1,63	1,58	1,49	1,43	1,33	1,23	1,15	1,11	1,07	0,89	0,68	0,35	0,28	0,20
	25	2,54	2,48	2,33	2,23	2,08	1,93	1,80	1,73	1,67	1,39	1,06	0,55	0,43	0,32
	40	4,07	3,96	3,74	3,57	3,33	3,09	2,89	2,77	2,67	2,23	1,70	0,88	0,69	0,52