

Natural Gas Filters / Natural Gas Regulators

GF 10, GR 20, GR 30, GR 60

GF 10 Series Natural Gas Filters

Natural gas, LPG, methane, propane, butane, city gas, air, non-aggressive gases

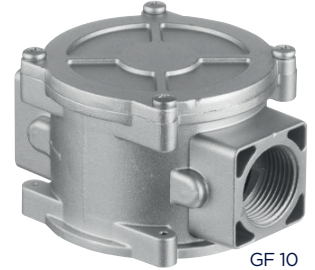
Body : Die-cast aluminium

Ambient Temperature : -10°C / +50°C

Max. Pressure : 4 bar

Flow rate measured at $\Delta P = 10$ mbar

Model No	Connection Size	Orifice	Pressure		Flow	Fluid Temperature		Diaphragm
			bar min	bar max		m ³ /h	°C min	
GF 10.03	1/2"	15	0	4	20	-10	80	NBR
GF 10.04	3/4"	20	0	4	40	-10	80	NBR
GF 10.05	1"	25	0	4	60	-10	80	NBR
GF 10.06	1 1/4"	32	0	4	125	-10	80	NBR
GF 10.07	1 1/2"	40	0	4	145	-10	80	NBR
GF 10.08	2"	50	0	4	190	-10	80	NBR



GF 10

GR 20 Series Emergency Relief Natural Gas Regulator (Max. Input Pressure 0,5 bar)

Natural gas, methane, propane, butane, city gas, air, non-aggressive gases

Body : Aluminium

Ambient Temperature : -10°C / +50°C

Max. Input Pressure : 0.5 bar

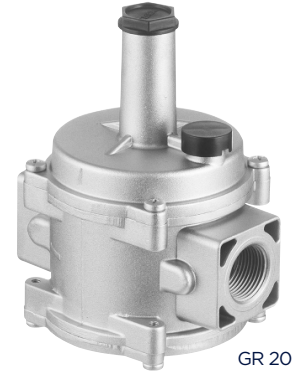
Output Pressure

Adjustment Range : 8-98 mbar

Flow rate measured at $\Delta P = 10$ mbar

Regulator output pressure is customized by the manufacturer considering the customer's applications.

Model No	Connection Size	Flow	Weight
GR 20	G"	m ³ /h	kg
GR 20.03	1/2"	10	0.72
GR 20.04	3/4"	15	0.75
GR 20.05	1"	20	0.78



GR 20

GR 30 Series Filtered Natural Gas Regulators, (Max. Input Pressure 1 bar)

Natural gas, methane, propane, butane, city gas, air, non-aggressive gases

Body : Aluminium

Ambient Temperature : -10°C...+50°C

Max. Input Pressure : 1 bar

Output Pressure

Adjustment Range : 10-500 mbar

Flow rate measured at $\Delta P = 10$ mbar

Regulator output pressure is customized by the manufacturer considering the customer's applications.

Model No	Connection Size	Flow	Weight
GR 30	G"	m ³ /h	kg
GR 30.03	1/2"	20	1.20
GR 30.04	3/4"	25	1.16
GR 30.05	1"	35	1.11
GR 30.06	1 1/4"	85	3.20
GR 30.07	1 1/2"	85	3.19
GR 30.08	2"	135	3.28



GR 30

GR 60 Series, Shut-Off Type Filtered Natural Gas Regulators (Max. Input Pressure 1 bar)

Natural gas, methane, propane, butane, city gas, air, non-aggressive gases

Body : Aluminium

Ambient Temperature : -10°C...+50°C

Max. Input Pressure : 1 bar

Output Pressure

Adjustment Range : 10-500 mbar

Flow rate measured at $\Delta P = 10$ mbar

Regulator output pressure is customized by the manufacturer considering the customer's applications.

Model No	Connection Size	Flow	Weight	Output Pressure
GR 60	G"	m ³ /h	kg	
GR 60.03	1/2"	20	1.90	8-14 mbar
GR 60.04	3/4"	25	1.87	14- 25 mbar
GR 60.05	1"	35	1.83	25 - 68 mbar
GR 60.06	1 1/4"	85	3.20	120- 180 mbar
GR 60.07	1 1/2"	85	3.19	320 - 450 mbar
GR 60.08	2"	135	3.28	



GR 60