

Type K16

DN 100 - 1200
PN 6 - 40

Shut-off Butterfly Valve with Double Eccentricity

Wafer, Flanged, Butt-Welded, LUG

Data Sheet

Edition: EN 3 / 2016

© MPOWER Engineering, a.s.
Pod vinicí 2028/20, Modřany, 143 00 Praha 4, CZ
T: +420 225 371 300, F: +420 225 371 325
E: info@mpowergroup.eu, W: www.mpowergroup.eu

together we are strong
www.mpowergroup.eu

Content

Application3

Technical description3

Connection ends.....3

Installation.....3

Testing3

Operation.....3

Advantages.....3

Operating data4

Characteristic of flow.....5

Operating parameters.....5

Materials of main parts / Dimensions according to EN.....6

 WAFER type, DN 100 – 600, PN 6 – 406

 Flanged type, DN 100 – 600, PN 6 – 25 (40).....8

 Flanged type, DN 700 – 1200, PN 6 – 258

 Butt-welded type, DN 100 – 600, PN 6 – 25 (40) 11

 Butt-welded type, DN 700 – 1200, PN 6 – 25 11

 LUG Type, DN 100 – 600, PN 6 – 40 14

Sealing of the disc.....16

Copyright

All rights reserved. No content provided herein may be copied, distributed or otherwise reproduced without previous written approval of the company MPOWER Engineering, a.s.

© MPOWER Engineering, a.s., Praha 2016

Contact

MPOWER Engineering, a.s.
Pod Vinicí 2028 / 20
143 00 Praha 4 – Modřany, CZ

T: +420 225 371 300
F: + 420 225 371 325
E: info@mpowergroup.eu
W: www.mpowergroup.eu



Application

- Industrial valves designed for entire closing or opening of the medium flow; they also can be used to regulate the medium flow
- Guaranteed sealing A in both directions at nominal working pressure:
Valves DN 100 – 300, PN 6 – 25 (40)
Valves DN 350 – 1200, PN 6 – 25
- **Fluids**
Water (sewage, supply water, drinking water), steam, oils, natural gas, coke oven gas and other non-aggressive liquids and gases
- **Industry**
Water industry, chemical and petrochemical industry, sugar industry, pulp and paper industry, nuclear power, geothermal resources, tankers

Technical description

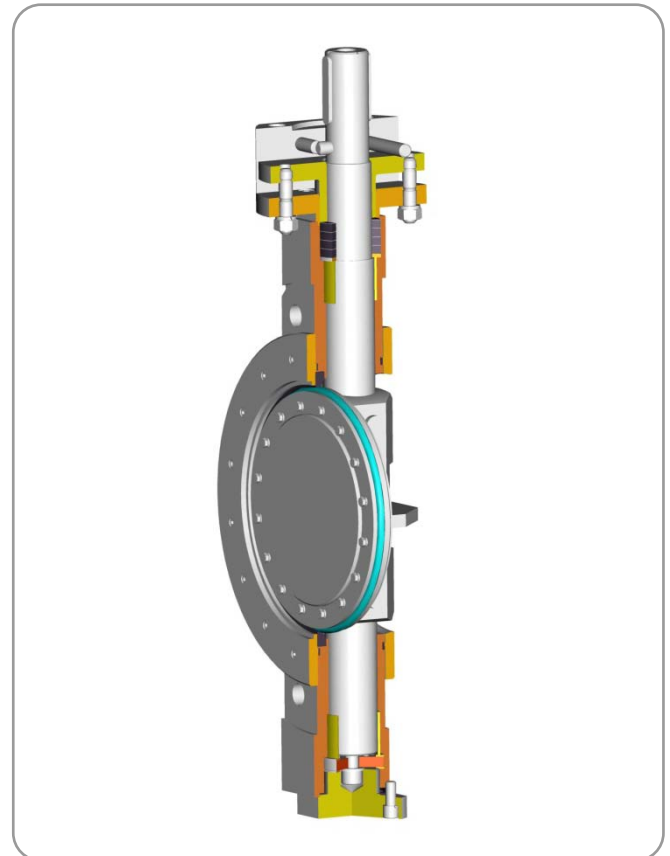
- Designed with double eccentricity
- Full bore
- Body material – rolled sheet / forging
- The axis of the control shaft is outside the sealing – seat axis; this solution enables an adequate sealing of the whole disc
- Disc closure is eccentrically inserted to the body and attached on the control shaft and the pin, inserted rotatably in the self-lubricating sliding bearings
- Shaft is sealed with the gland
- Pin sealed with flat asbestos-free sealing
- Material of sealing metal – metal
- Building length according to ČSN EN 558, line 16 – WAFER type
- Building length according to ČSN EN 558, line 14 (DIN 3202-1, line F4) – flange type
- Actuator mounting in accordance with ISO 5211
- Inner spaces can be provided by protection layers (RILSAN, HALAR,...)
- Marking according to EN standards

Connection ends

- WAFER type: PN 6 – 40
- Flanged type: PN 6 – 25 (40)
- Butt-welded type: PN 6 – 25 (40)
- LUG type PN 6 - 40

Installation

- Shut-off valves are installed on horizontal, vertical and oblique pipes so that the arrow on the body goes along with the direction of the medium flow
- The axis of the valve disc rotation can be both in the horizontal and vertical position



Testing

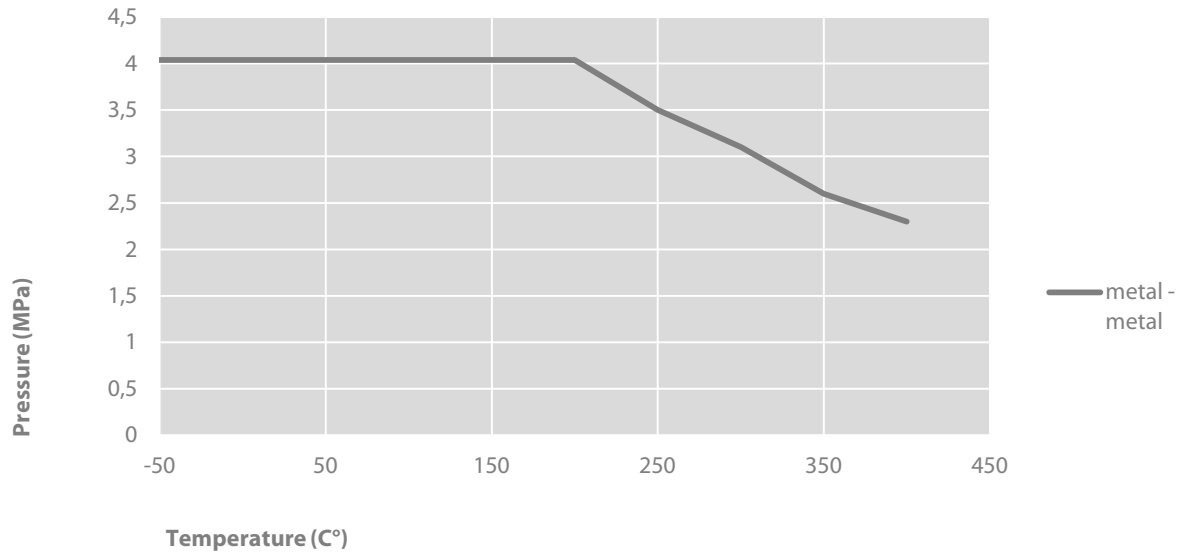
- Valves are tested according to ČSN EN 12266-1

Operation

- Manual gear
- Level gear
- Electric actuator
- Pneumatic actuator

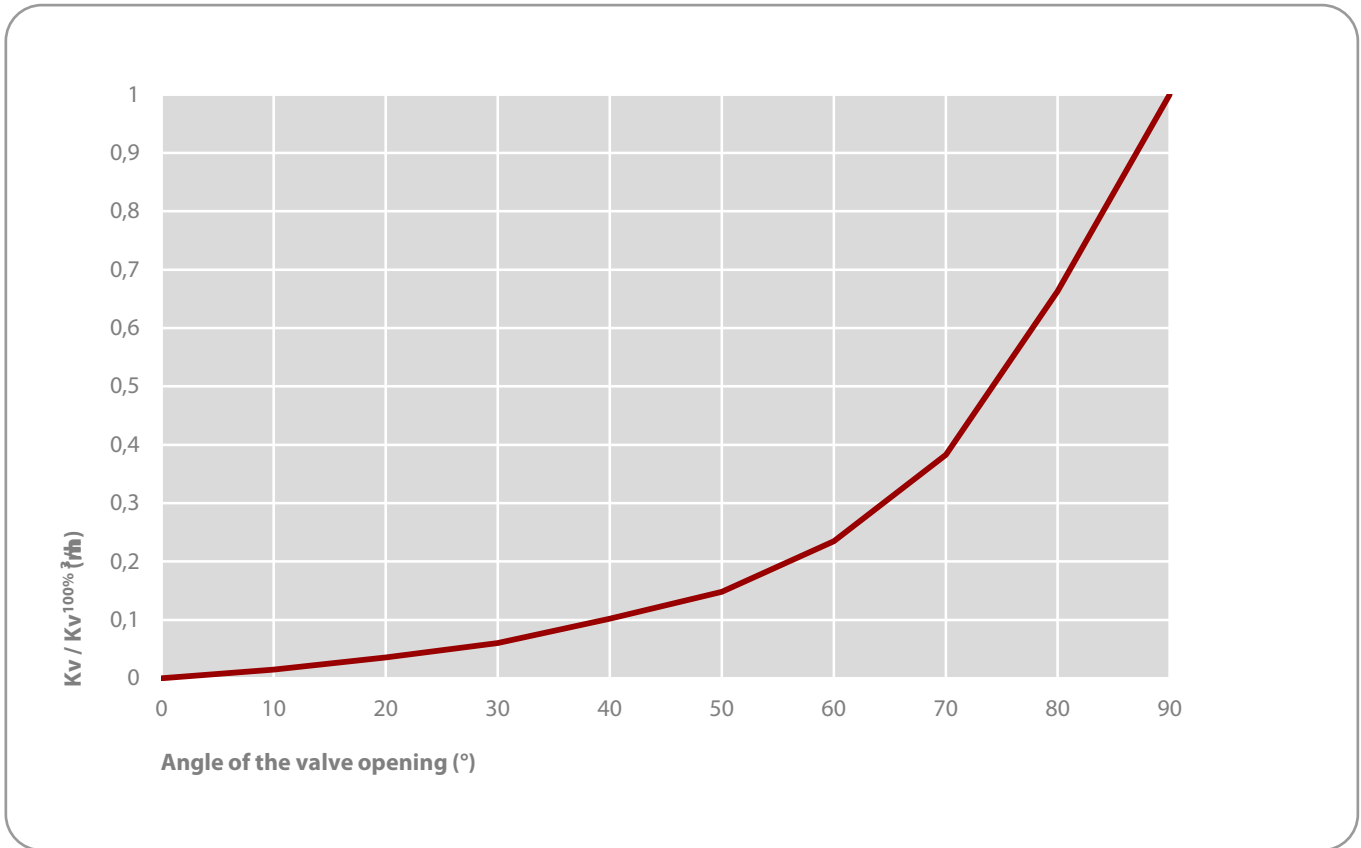
Advantages

- Guaranteed sealing in both directions at nominal working pressure
- Possibility to use the valve for rough regulation, material of sealing metal – metal, guaranteed sealing A according to EN 12266-1
- Possibility of dismantling the butt-welded body from pipeline without burning of the welds
- Simple adaptation of the flange size for actuator mounting according to customer request
- Possibility of adjustments of the flange type building length according to customer requests
- Connection for the following pressure ranges: PN 6, 10, 16, 25, 40 (on request other types of connection can be used)

Operating data
Graph: Dependence of pressure and temperature


| Material of body | PN | Working pressure MPa / Working temperature °C | | | | | | | | | | |
|--|-----------|---|-----|-----|-----|-----|------|------|------|------|------|------|
| | | -50 | -30 | -20 | 20 | 100 | 150 | 200 | 250 | 300 | 350 | 400 |
| P265GH (W.Nr.1.0425) | 6 | - | - | - | 0,6 | 0,6 | 0,6 | 0,6 | 0,53 | 0,46 | 0,4 | 0,34 |
| | 10 | - | - | - | 1,0 | 1,0 | 1,0 | 1,0 | 0,88 | 0,77 | 0,66 | 0,57 |
| | 16 | - | - | - | 1,6 | 1,6 | 1,6 | 1,6 | 1,41 | 1,23 | 1,06 | 0,91 |
| | 25 | - | - | - | 2,5 | 2,5 | 2,5 | 2,5 | 2,2 | 1,93 | 1,65 | 1,43 |
| | 40 | - | - | - | 4,0 | 4,0 | 4,0 | 4,0 | 3,52 | 3,08 | 2,64 | 2,28 |
| P355NL1 (W.Nr.1.0566) P355NL2 (W.Nr.1.1106) | 6 | 0,6 | 0,6 | 0,6 | 0,6 | 0,6 | 0,6 | 0,6 | 0,6 | 0,6 | 0,55 | 0,44 |
| | 10 | 1,0 | 1,0 | 1,0 | 1,0 | 1,0 | 1,0 | 1,0 | 1,0 | 1,0 | 0,91 | 0,74 |
| | 16 | 1,6 | 1,6 | 1,6 | 1,6 | 1,6 | 1,6 | 1,6 | 1,6 | 1,6 | 1,46 | 1,18 |
| | 25 | 2,5 | 2,5 | 2,5 | 2,5 | 2,5 | 2,5 | 2,5 | 2,5 | 2,5 | 2,28 | 1,85 |
| | 40 | 4,0 | 4,0 | 4,0 | 4,0 | 4,0 | 4,0 | 4,0 | 4,0 | 4,0 | 3,64 | 2,96 |
| X2CrNiMo17-12-2 (W.Nr.1.4404) | 6 | 0,6 | 0,6 | 0,6 | 0,6 | 0,6 | 0,55 | 0,5 | 0,47 | 0,44 | 0,42 | 0,41 |
| | 10 | 1,0 | 1,0 | 1,0 | 1,0 | 1,0 | 0,92 | 0,84 | 0,78 | 0,74 | 0,7 | 0,69 |
| | 16 | 1,6 | 1,6 | 1,6 | 1,6 | 1,6 | 1,47 | 1,34 | 1,25 | 1,18 | 1,12 | 1,1 |
| | 25 | 2,5 | 2,5 | 2,5 | 2,5 | 2,5 | 2,3 | 2,1 | 1,95 | 1,85 | 1,75 | 1,73 |
| | 40 | 4,0 | 4,0 | 4,0 | 4,0 | 4,0 | 3,68 | 3,36 | 3,12 | 2,96 | 2,8 | 2,76 |
| X6CrNiTi18-10 (W.Nr.1.4541) | 6 | 0,6 | 0,6 | 0,6 | 0,6 | 0,6 | 0,58 | 0,55 | 0,51 | 0,47 | 0,45 | 0,43 |
| | 10 | 1,0 | 1,0 | 1,0 | 1,0 | 1,0 | 0,97 | 0,91 | 0,85 | 0,79 | 0,75 | 0,72 |
| | 16 | 1,6 | 1,6 | 1,6 | 1,6 | 1,6 | 1,55 | 1,46 | 1,36 | 1,26 | 1,2 | 1,15 |
| | 25 | 2,5 | 2,5 | 2,5 | 2,5 | 2,5 | 2,43 | 2,28 | 2,13 | 1,98 | 1,88 | 1,8 |
| | 40 | 4,0 | 4,0 | 4,0 | 4,0 | 4,0 | 3,88 | 3,64 | 3,4 | 3,16 | 3,0 | 2,88 |

Characteristic of flow

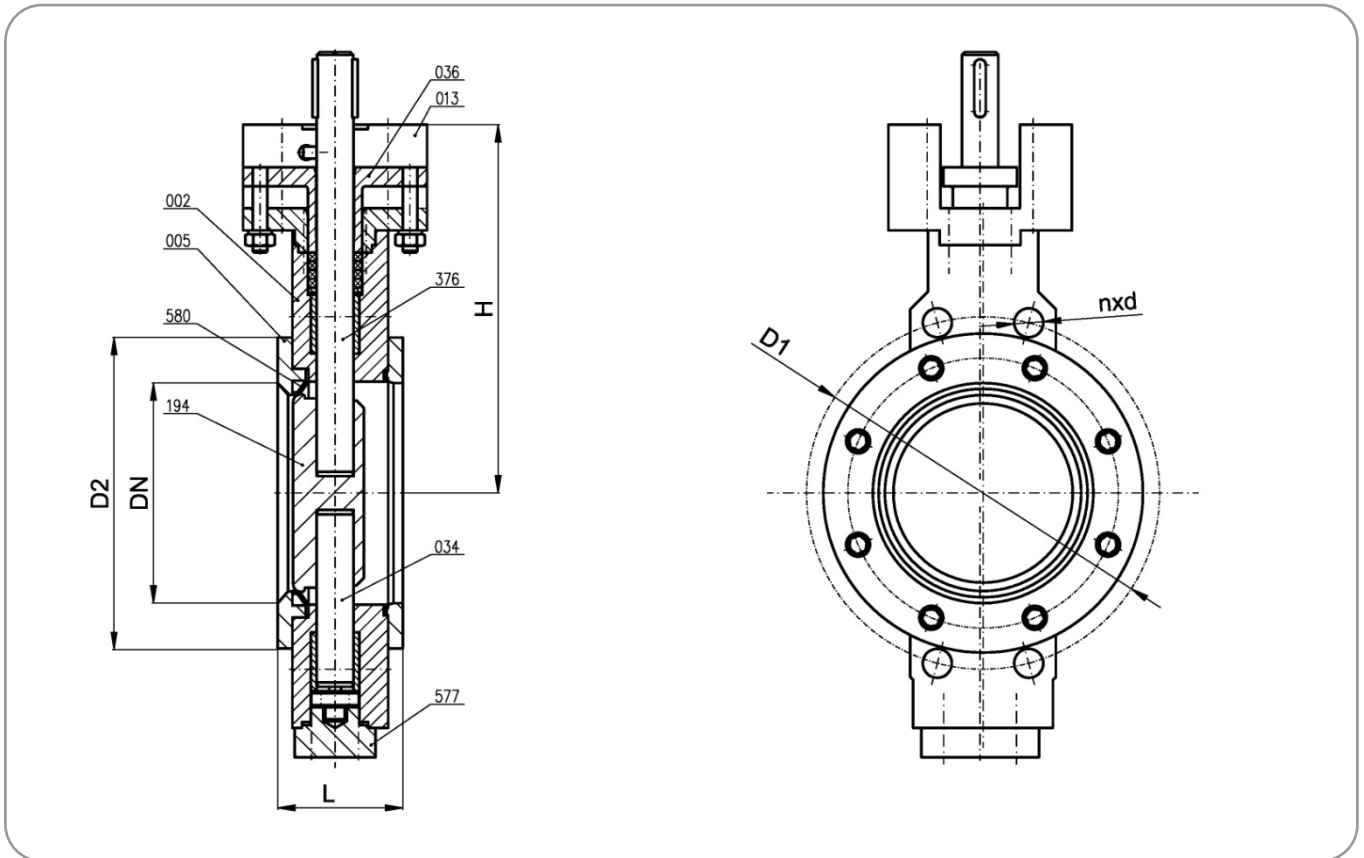


Operating parameters

| Working temperature °C | Material of sealing | Proper application |
|------------------------|---------------------|-----------------------------------|
| From +250 to +400 | Stainless steel | High chemical and heat resistance |

Materials of main parts / Dimensions according to EN

WAFER type, DN 100 – 600, PN 6 – 40



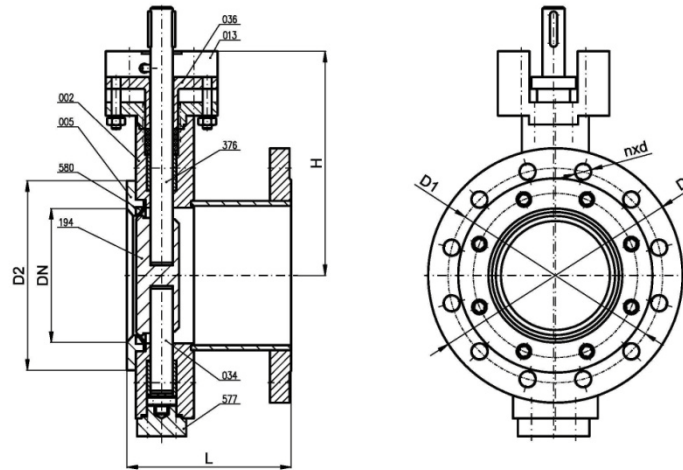
Materials of main parts

| Pos. | Name | Material | |
|------|-----------------------|--|----------------------------------|
| | | Carbon steel | Stainless steel |
| 002 | Body | P265GH P355NL1, NL2 | X6CrNiTi18-10 X2CrNiMo17-12-2 |
| 005 | Flange | | |
| 036 | Gland bushing | | |
| 013 | Gland flange | | |
| 577 | Cover | | |
| 194 | Disc | P265GH, P355NL1,NL2, X6CrNiTi18-10, X2CrNiMo17-12-2 | X6CrNiTi18-10, X2CrNiMo17-12-2 |
| 376 | Shaft | X20Cr13 | X17CrNi16-2 |
| 580 | Sealing – seat | INCONEL, stainless steel | |

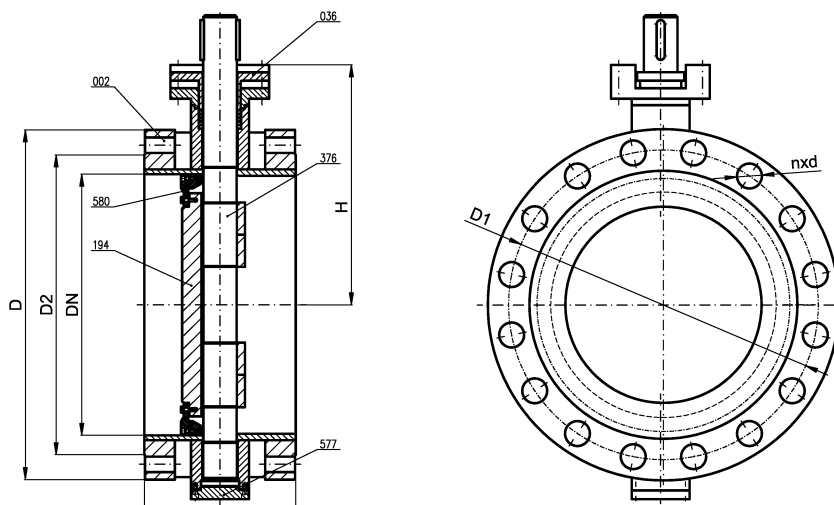
Dimensions according to EN

| PN | DN | L mm | D1 mm | D2 mm | nxd | H mm | m kg |
|----|-----|---------|----------|----------|-------|---------|---------|
| 6 | 100 | 64 | 170 | 148 | 4x18 | 170 | 13 |
| | 125 | 70 | 200 | 178 | 8x18 | 205 | 18 |
| | 150 | 76 | 225 | 202 | 8x18 | 220 | 21 |
| | 200 | 89 | 280 | 258 | 8x18 | 251 | 34 |
| | 250 | 114 | 335 | 312 | 12x18 | 281 | 48 |
| | 300 | 114 | 395 | 365 | 12x22 | 315 | 63 |
| | 350 | 127 | 445 | 415 | 12x22 | 363 | 88 |
| | 400 | 140 | 495 | 465 | 16x22 | 407 | 120 |
| | 500 | 152 | 600 | 570 | 20x22 | 529 | 194 |
| | 600 | 178 | 705 | 670 | 20x26 | 534 | 362 |
| 10 | 100 | 64 | 180 | 158 | 8x18 | 170 | 13 |
| | 125 | 70 | 210 | 188 | 8x18 | 205 | 19 |
| | 150 | 76 | 240 | 212 | 8x22 | 220 | 22 |
| | 200 | 89 | 295 | 268 | 8x22 | 251 | 35 |
| | 250 | 114 | 350 | 320 | 12x22 | 281 | 51 |
| | 300 | 114 | 400 | 370 | 12x22 | 315 | 65 |
| | 350 | 127 | 460 | 430 | 16x22 | 363 | 96 |
| | 400 | 140 | 515 | 482 | 16x26 | 407 | 136 |
| | 500 | 152 | 620 | 585 | 20x26 | 529 | 209 |
| | 600 | 178 | 725 | 685 | 20x30 | 534 | 367 |
| 16 | 100 | 64 | 180 | 158 | 8x18 | 170 | 13 |
| | 125 | 70 | 210 | 188 | 8x18 | 205 | 19 |
| | 150 | 76 | 240 | 212 | 8x22 | 220 | 22 |
| | 200 | 89 | 295 | 268 | 12x22 | 251 | 35 |
| | 250 | 114 | 355 | 320 | 12x26 | 281 | 51 |
| | 300 | 114 | 410 | 378 | 12x26 | 315 | 68 |
| | 350 | 127 | 470 | 438 | 16x26 | 363 | 100 |
| | 400 | 140 | 525 | 490 | 16x30 | 407 | 141 |
| | 500 | 152 | 650 | 610 | 20x33 | 529 | 238 |
| | 600 | 178 | 770 | 725 | 20x36 | 534 | 398 |
| 25 | 100 | 64 | 190 | 162 | 8x22 | 170 | 13 |
| | 125 | 70 | 220 | 188 | 8x26 | 205 | 19 |
| | 150 | 76 | 250 | 218 | 8x26 | 220 | 23 |
| | 200 | 89 | 310 | 278 | 12x26 | 251 | 37 |
| | 250 | 114 | 370 | 335 | 12x30 | 281 | 56 |
| | 300 | 114 | 430 | 395 | 16x30 | 315 | 75 |
| | 350 | 127 | 490 | 450 | 16x33 | 363 | 108 |
| | 400 | 140 | 550 | 505 | 16x36 | 407 | 154 |
| | 500 | 152 | 660 | 615 | 20x36 | 529 | 259 |
| | 600 | 178 | 770 | 720 | 20x39 | 534 | 438 |
| 40 | 100 | 64 | 190 | 162 | 8x22 | 220 | 15 |
| | 125 | 70 | 220 | 188 | 8x26 | 255 | 22 |
| | 150 | 76 | 250 | 218 | 8x26 | 270 | 26 |
| | 200 | 89 | 320 | 285 | 12x30 | 300 | 43 |
| | 250 | 114 | 385 | 345 | 12x33 | 311 | 64 |
| | 300 | 114 | 450 | 410 | 16x33 | 365 | 86 |

Flanged type, DN 100 – 600, PN 6 – 25 (40)



Flanged type, DN 700 – 1200, PN 6 – 25



Materials of main parts

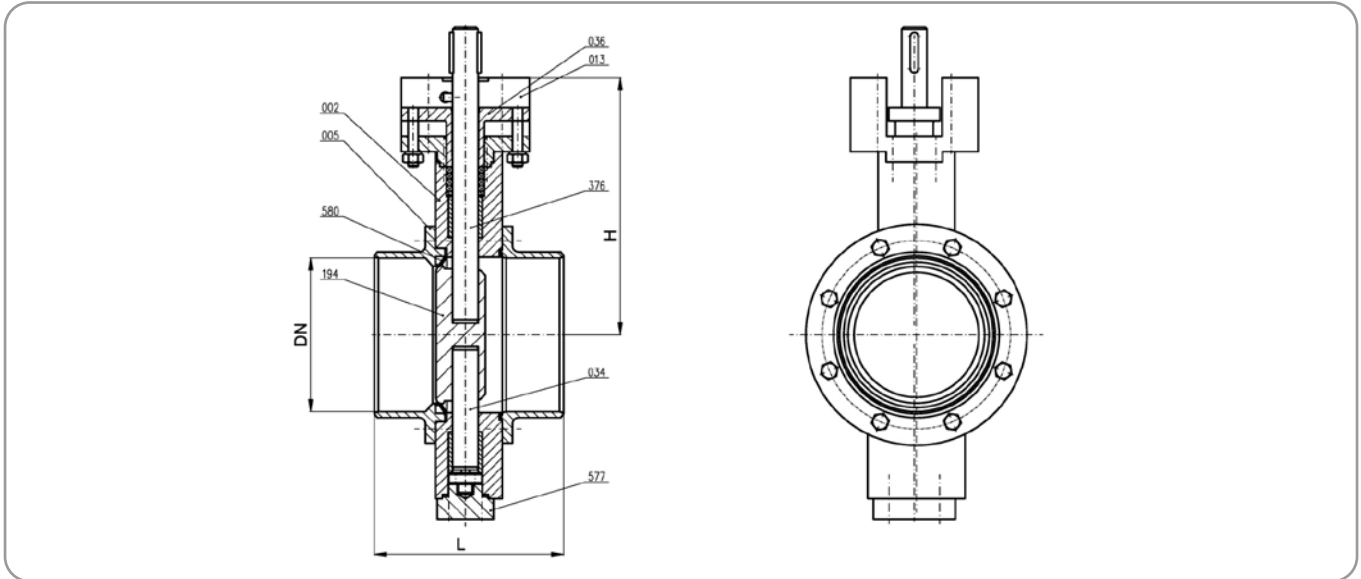
| Pos. | Name | Material | |
|------|----------------------------------|--|----------------------------------|
| | | Carbon steel | Stainless steel |
| 002 | Body | P265GH P355NL1, NL2 | X6CrNiTi18-10 X2CrNiMo17-12-2 |
| 005 | Flange / butt-welded ends | | |
| 036 | Gland bushing | | |
| 013 | Gland flange | | |
| 577 | Cover | P265GH, P355NL1,NL2, X6CrNiTi18-10, X2CrNiMo17-12-2 | X6CrNiTi18-10, X2CrNiMo17-12-2 |
| 194 | Disc | | |
| 376 | Shaft | X20Cr13 | X17CrNi16-2 |
| 580 | Sealing – seat | INCONEL, stainless steel | |

Dimensions according to EN

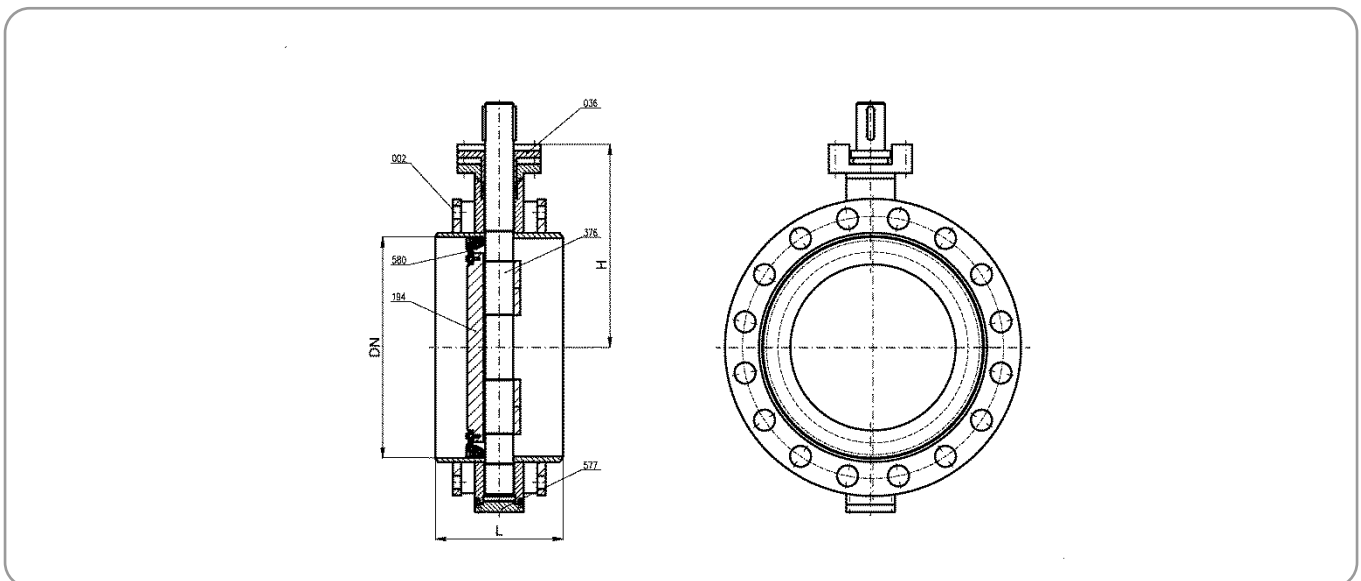
| PN | DN | L mm | D mm | D1 mm | D2 mm | nxd | H mm | m kg |
|-------------|-------------|-----------------|-----------------|------------------|------------------|------------|-----------------|-----------------|
| 6 | 100 | 190 | 200 | 170 | 148 | 4x18 | 170 | 23 |
| | 125 | 200 | 240 | 200 | 178 | 8x18 | 205 | 30 |
| | 150 | 210 | 265 | 225 | 202 | 8x18 | 220 | 35 |
| | 200 | 230 | 320 | 280 | 258 | 8x18 | 251 | 55 |
| | 250 | 250 | 375 | 335 | 312 | 12x18 | 281 | 75 |
| | 300 | 270 | 440 | 395 | 365 | 12x22 | 315 | 104 |
| | 350 | 290 | 490 | 445 | 415 | 12x22 | 363 | 139 |
| | 400 | 310 | 540 | 495 | 465 | 16x22 | 407 | 182 |
| | 500 | 350 | 645 | 600 | 570 | 20x22 | 579 | 253 |
| | 600 | 390 | 755 | 705 | 670 | 20x26 | 584 | 353 |
| | 700 | 430 | 860 | 810 | 775 | 24x26 | 680 | 747 |
| | 800 | 470 | 975 | 920 | 880 | 24x30 | 900 | 941 |
| | 900 | 510 | 1075 | 1020 | 980 | 24x30 | 945 | 1085 |
| | 1000 | 550 | 1175 | 1120 | 1080 | 28x30 | 1030 | 1563 |
| 1200 | 630 | 1405 | 1340 | 1295 | 32x33 | 1150 | 2054 | |
| 10 | 100 | 190 | 220 | 180 | 158 | 8x18 | 170 | 23 |
| | 125 | 200 | 250 | 210 | 188 | 8x18 | 205 | 35 |
| | 150 | 210 | 285 | 240 | 212 | 8x18 | 220 | 40 |
| | 200 | 230 | 340 | 295 | 268 | 8x22 | 251 | 62 |
| | 250 | 250 | 395 | 350 | 320 | 12x22 | 281 | 82 |
| | 300 | 270 | 445 | 400 | 370 | 12x22 | 315 | 113 |
| | 350 | 290 | 505 | 460 | 430 | 16x22 | 363 | 150 |
| | 400 | 310 | 565 | 515 | 482 | 16x26 | 407 | 198 |
| | 500 | 350 | 670 | 620 | 585 | 20x26 | 529 | 268 |
| | 600 | 390 | 780 | 725 | 685 | 20x30 | 534 | 367 |
| | 700 | 430 | 895 | 840 | 800 | 24x30 | 680 | 783 |
| | 800 | 470 | 1015 | 950 | 905 | 24x33 | 900 | 1041 |
| | 900 | 510 | 1115 | 1050 | 1005 | 28x33 | 945 | 1338 |
| | 1000 | 550 | 1230 | 1160 | 1110 | 28x36 | 1030 | 1735 |
| 1200 | 630 | 1455 | 1380 | 1330 | 32x39 | 1150 | 2247 | |
| 16 | 100 | 190 | 220 | 180 | 158 | 8x18 | 170 | 25 |
| | 125 | 200 | 250 | 210 | 188 | 8x18 | 205 | 37 |
| | 150 | 210 | 285 | 240 | 212 | 8x22 | 220 | 40 |
| | 200 | 230 | 340 | 295 | 268 | 12x22 | 251 | 61 |
| | 250 | 250 | 405 | 355 | 320 | 12x26 | 281 | 84 |
| | 300 | 270 | 460 | 410 | 378 | 12x26 | 315 | 119 |
| | 350 | 290 | 520 | 470 | 438 | 16x26 | 363 | 160 |
| | 400 | 310 | 580 | 525 | 490 | 16x30 | 407 | 217 |
| | 500 | 350 | 715 | 650 | 610 | 20x33 | 529 | 294 |
| | 600 | 390 | 840 | 770 | 725 | 20x36 | 534 | 492 |
| | 700 | 430 | 910 | 840 | 795 | 24x36 | 680 | 1043 |
| | 800 | 470 | 1025 | 950 | 900 | 24x39 | 900 | 1230 |
| | 900 | 510 | 1125 | 1050 | 1000 | 28x39 | 945 | 1491 |
| | 1000 | 550 | 1255 | 1170 | 1115 | 28x42 | 1030 | 1819 |
| 1200 | 630 | 1485 | 1390 | 1330 | 32x48 | 1150 | 2375 | |

| PN | DN | L mm | D mm | D1 mm | D2 mm | nxd | H mm | m kg |
|------|-----|---------|---------|----------|----------|-------|---------|---------|
| 25 | 100 | 190 | 235 | 190 | 162 | 8x22 | 170 | 27 |
| | 125 | 200 | 270 | 220 | 188 | 8x26 | 205 | 38 |
| | 150 | 210 | 300 | 250 | 218 | 8x26 | 220 | 47 |
| | 200 | 230 | 360 | 310 | 278 | 12x26 | 251 | 73 |
| | 250 | 250 | 425 | 370 | 335 | 12x30 | 281 | 98 |
| | 300 | 270 | 485 | 430 | 395 | 16x30 | 315 | 137 |
| | 350 | 290 | 555 | 490 | 450 | 16x33 | 363 | 192 |
| | 400 | 310 | 620 | 550 | 505 | 16x36 | 407 | 261 |
| | 500 | 350 | 730 | 660 | 615 | 20x36 | 529 | 377 |
| | 600 | 390 | 845 | 770 | 720 | 20x39 | 534 | 508 |
| | 700 | 430 | 960 | 875 | 820 | 24x42 | 680 | 1102 |
| | 800 | 470 | 1085 | 990 | 930 | 24x48 | 900 | 1280 |
| | 900 | 510 | 1185 | 1090 | 1030 | 28x48 | 945 | 1671 |
| 1000 | 550 | 1320 | 1210 | 1140 | 28x56 | 1030 | 2040 | |
| 1200 | 630 | 1530 | 1420 | 1350 | 32x56 | 1150 | 3515 | |
| 40 | 100 | 190 | 235 | 190 | 162 | 8x22 | 170 | 35 |
| | 125 | 200 | 270 | 220 | 188 | 8x26 | 205 | 50 |
| | 150 | 210 | 300 | 250 | 218 | 8x26 | 220 | 61 |
| | 200 | 230 | 375 | 320 | 285 | 12x30 | 251 | 95 |
| | 250 | 250 | 450 | 385 | 345 | 12x33 | 281 | 128 |
| | 300 | 270 | 515 | 450 | 410 | 16x33 | 315 | 178 |

Butt-welded type, DN 100 – 600, PN 6 – 25 (40)



Butt-welded type, DN 700 – 1200, PN 6 – 25



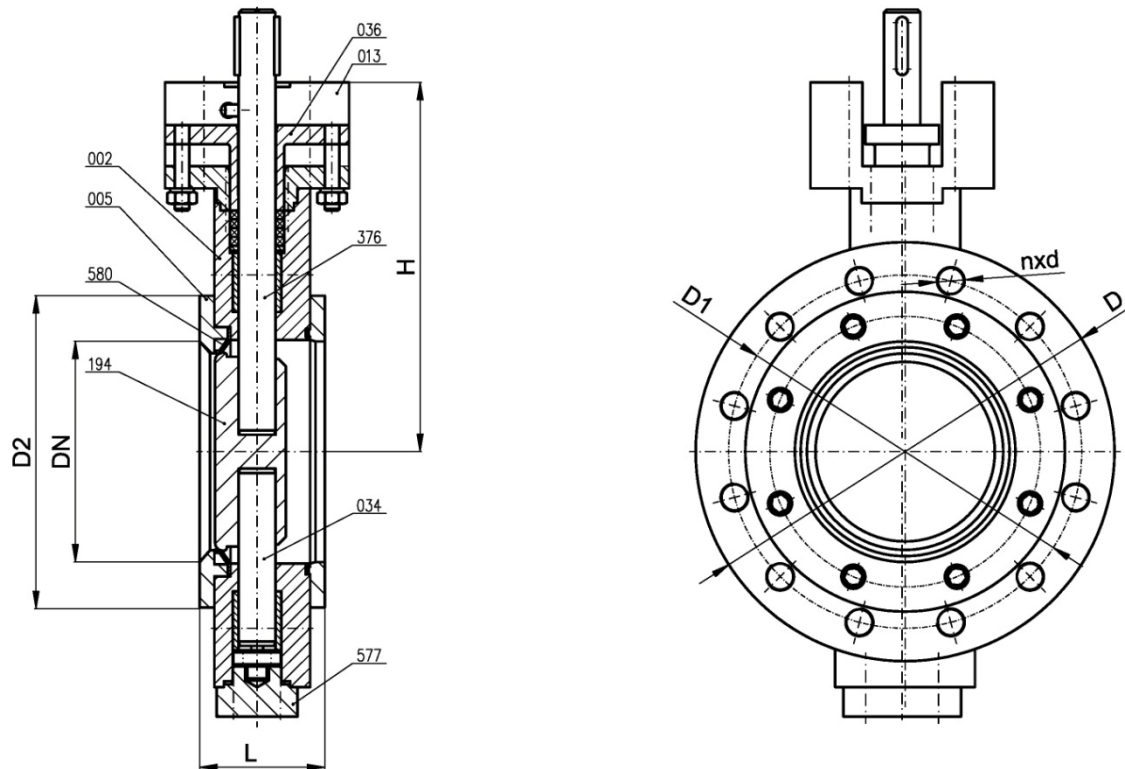
Materials of main parts

| Pos. | Name | Material | |
|------|----------------------------------|--|----------------------------------|
| | | Carbon steel | Stainless steel |
| 002 | Body | P265GH P355NL1, NL2 | X6CrNiTi18-10 X2CrNiMo17-12-2 |
| 005 | Flange / butt-welded ends | | |
| 036 | Gland bushing | | |
| 013 | Gland flange | | |
| 577 | Cover | | |
| 194 | Disc | P265GH, P355NL1,NL2, X6CrNiTi18-10, X2CrNiMo17-12-2 | X6CrNiTi18-10, X2CrNiMo17-12-2 |
| 376 | Shaft | X20Cr13 | X17CrNi16-2 |
| 580 | Sealing – seat | INCONEL, stainless steel | |

Dimensions according to EN

| PN | DN | L mm | H mm | m kg |
|-------------|-------------|-----------------|-----------------|-----------------|
| 6 | 100 | 190 | 170 | 17 |
| | 125 | 200 | 205 | 22 |
| | 150 | 210 | 220 | 25 |
| | 200 | 230 | 251 | 41 |
| | 250 | 250 | 281 | 55 |
| | 300 | 270 | 315 | 78 |
| | 350 | 290 | 363 | 109 |
| | 400 | 310 | 407 | 149 |
| | 500 | 350 | 529 | 195 |
| | 600 | 390 | 534 | 266 |
| | 700 | 430 | 680 | 554 |
| | 800 | 470 | 900 | 765 |
| | 900 | 510 | 945 | 995 |
| 10 | 1000 | 550 | 1030 | 1347 |
| | 1200 | 630 | 1150 | 1702 |
| | 100 | 190 | 170 | 17 |
| | 125 | 200 | 205 | 22 |
| | 150 | 210 | 220 | 25 |
| | 200 | 230 | 251 | 41 |
| | 250 | 250 | 281 | 54 |
| | 300 | 270 | 315 | 81 |
| | 350 | 290 | 363 | 110 |
| | 400 | 310 | 407 | 151 |
| | 500 | 350 | 529 | 195 |
| | 600 | 390 | 534 | 273 |
| | 700 | 430 | 680 | 554 |
| 800 | 470 | 900 | 765 | |
| 900 | 510 | 945 | 995 | |
| 16 | 1000 | 550 | 1030 | 1391 |
| | 1200 | 630 | 1150 | 1702 |
| | 100 | 190 | 170 | 17 |
| | 125 | 200 | 205 | 25 |
| | 150 | 210 | 220 | 26 |
| | 200 | 230 | 251 | 41 |
| | 250 | 250 | 281 | 54 |
| | 300 | 270 | 315 | 81 |
| | 350 | 290 | 363 | 110 |
| | 400 | 310 | 407 | 153 |
| | 500 | 350 | 529 | 200 |
| | 600 | 390 | 534 | 280 |
| | 700 | 430 | 680 | 573 |
| 800 | 470 | 900 | 771 | |
| 900 | 510 | 945 | 1002 | |
| 1000 | 550 | 1030 | 1391 | |
| 1200 | 630 | 1150 | 1730 | |

| PN | DN | L mm | H mm | m kg |
|------|-----|---------|---------|---------|
| 25 | 100 | 190 | 170 | 17 |
| | 125 | 200 | 205 | 25 |
| | 150 | 210 | 220 | 29 |
| | 200 | 230 | 251 | 43 |
| | 250 | 250 | 281 | 56 |
| | 300 | 270 | 315 | 83 |
| | 350 | 290 | 363 | 114 |
| | 400 | 310 | 407 | 161 |
| | 500 | 350 | 529 | 219 |
| | 600 | 390 | 534 | 280 |
| | 700 | 430 | 680 | 573 |
| | 800 | 470 | 900 | 845 |
| | 900 | 510 | 945 | 1097 |
| 1000 | 550 | 1030 | 1406 | |
| 1200 | 630 | 1150 | 2102 | |
| 40 | 100 | 190 | 170 | 20 |
| | 125 | 200 | 205 | 29 |
| | 150 | 210 | 220 | 33 |
| | 200 | 230 | 251 | 49 |
| | 250 | 250 | 281 | 64 |
| | 300 | 270 | 315 | 96 |

LUG Type, DN 100 – 600, PN 6 – 40

Materials of main parts

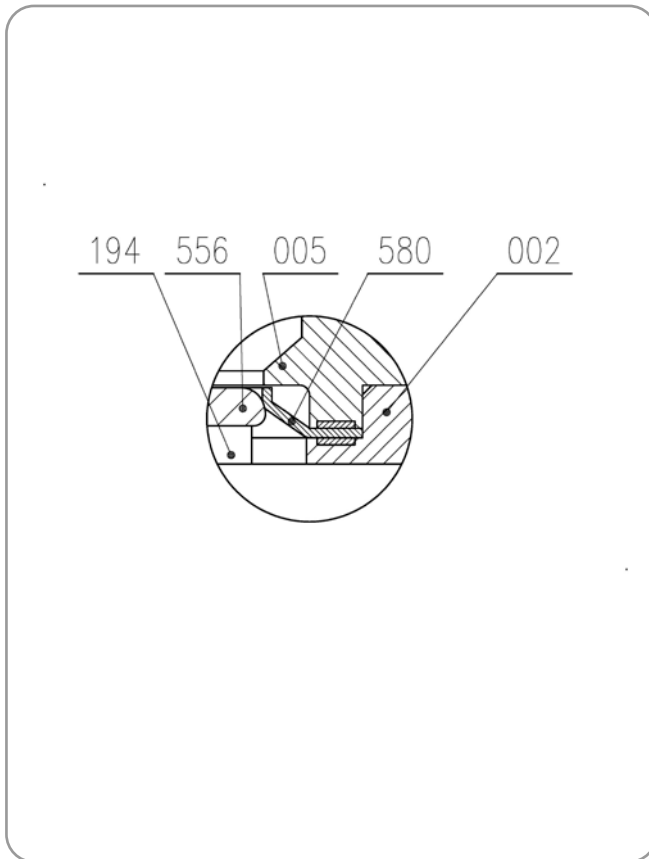
| Pos. | Name | Material | |
|------|-----------------------|--|----------------------------------|
| | | Carbon steel | Stainless steel |
| 002 | Body | | |
| 005 | Flange | | |
| 036 | Gland bushing | P265GH P355NL1, NL2 | X6CrNiTi18-10 X2CrNiMo17-12-2 |
| 013 | Gland flange | | |
| 194 | Disc | | |
| 577 | Cover | | |
| 578 | Pressure ring | | |
| 376 | Shaft | P265GH, P355NL1,NL2, X6CrNiTi18-10, X2CrNiMo17-12-2 | X6CrNiTi18-10, X2CrNiMo17-12-2 |
| 556 | Sealing | X20Cr13 | X17CrNi16-2 |
| 580 | Sealing – seat | INCONEL, stainless steel | |

Dimensions according to EN

| PN | DN | D ₁ mm | D ₂ mm | D mm | H mm | L mm | n | d | m kg |
|-----|-----|----------------------|----------------------|---------|---------|---------|-------|-----|---------|
| 6 | 100 | 170 | 148 | 210 | 170 | 64 | 4 | M16 | 22 |
| | 125 | 200 | 178 | 240 | 205 | 70 | 8 | M16 | 31 |
| | 150 | 225 | 202 | 265 | 220 | 76 | 8 | M16 | 36 |
| | 200 | 280 | 258 | 320 | 251 | 89 | 8 | M16 | 58 |
| | 250 | 335 | 312 | 375 | 281 | 114 | 12 | M16 | 85 |
| | 300 | 395 | 365 | 440 | 315 | 114 | 12 | M20 | 107 |
| | 350 | 445 | 415 | 490 | 363 | 127 | 12 | M20 | 150 |
| | 400 | 495 | 465 | 540 | 407 | 140 | 16 | M20 | 204 |
| | 500 | 600 | 570 | 645 | 529 | 152 | 20 | M20 | 291 |
| 600 | 705 | 670 | 755 | 534 | 178 | 20 | M24 | 543 | |
| 10 | 100 | 180 | 158 | 220 | 170 | 64 | 8 | M16 | 22 |
| | 125 | 210 | 188 | 250 | 205 | 70 | 8 | M16 | 32 |
| | 150 | 240 | 212 | 285 | 220 | 76 | 8 | M20 | 38 |
| | 200 | 295 | 268 | 340 | 251 | 89 | 8 | M20 | 60 |
| | 250 | 350 | 320 | 395 | 281 | 114 | 12 | M20 | 87 |
| | 300 | 400 | 370 | 445 | 315 | 114 | 12 | M20 | 111 |
| | 350 | 460 | 430 | 505 | 363 | 127 | 16 | M20 | 163 |
| | 400 | 515 | 482 | 565 | 407 | 140 | 16 | M24 | 231 |
| | 500 | 620 | 585 | 670 | 529 | 152 | 20 | M24 | 314 |
| 600 | 725 | 685 | 780 | 534 | 178 | 20 | M27 | 551 | |
| 16 | 100 | 180 | 158 | 220 | 170 | 64 | 8 | M16 | 22 |
| | 125 | 210 | 188 | 250 | 205 | 70 | 8 | M16 | 33 |
| | 150 | 240 | 212 | 285 | 220 | 76 | 8 | M20 | 37 |
| | 200 | 295 | 268 | 340 | 251 | 89 | 12 | M20 | 60 |
| | 250 | 355 | 320 | 405 | 281 | 114 | 12 | M24 | 87 |
| | 300 | 410 | 378 | 460 | 315 | 114 | 12 | M24 | 116 |
| | 350 | 470 | 438 | 520 | 363 | 127 | 16 | M24 | 170 |
| | 400 | 525 | 490 | 580 | 407 | 140 | 16 | M27 | 240 |
| | 500 | 650 | 610 | 715 | 529 | 152 | 20 | M30 | 357 |
| 600 | 770 | 725 | 840 | 534 | 178 | 20 | M33 | 597 | |
| 25 | 100 | 190 | 162 | 235 | 170 | 64 | 8 | M20 | 22 |
| | 125 | 220 | 188 | 270 | 205 | 70 | 8 | M24 | 33 |
| | 150 | 250 | 218 | 300 | 220 | 76 | 8 | M24 | 39 |
| | 200 | 310 | 278 | 360 | 251 | 89 | 12 | M24 | 63 |
| | 250 | 370 | 335 | 425 | 281 | 114 | 12 | M27 | 95 |
| | 300 | 430 | 395 | 485 | 315 | 114 | 16 | M27 | 128 |
| | 350 | 490 | 450 | 555 | 363 | 127 | 16 | M30 | 184 |
| | 400 | 550 | 505 | 620 | 407 | 140 | 16 | M33 | 262 |
| | 500 | 660 | 615 | 730 | 529 | 152 | 20 | M33 | 389 |
| 600 | 770 | 720 | 845 | 534 | 178 | 20 | M36x3 | 554 | |
| 40 | 100 | 190 | 162 | 235 | 220 | 64 | 8 | M20 | 26 |
| | 125 | 220 | 188 | 270 | 255 | 70 | 8 | M24 | 37 |
| | 150 | 250 | 218 | 300 | 270 | 76 | 8 | M24 | 44 |
| | 200 | 320 | 285 | 375 | 300 | 89 | 12 | M27 | 73 |
| | 250 | 385 | 345 | 450 | 311 | 114 | 12 | M30 | 109 |
| | 300 | 450 | 410 | 515 | 365 | 114 | 16 | M30 | 146 |

Sealing of the disc

Metal sealing ring



| Pos. | Name | Material | |
|------|------------------------------------|--|-----------------------------------|
| | | Carbon steel | Stainless steel |
| 002 | Body | P265GH P355NL1, NL2 | X6CrNiTi18-10 X2CrNiMo17-12-2 |
| 005 | Flange Butt-welded ends | P265GH P355NL1, NL2 | X6CrNiTi18-10 X2CrNiMo17-12-2 |
| 194 | Disc | P265GH, P355NL1,NL2, X6CrNiTi18-10, X2CrNiMo17-12-2 | X6CrNiTi18-10, X2CrNiMo17-12-2 |
| 556 | Sealing ring | stainless steel | |
| 580 | Sealing – seat | INCONEL | |