

# BT Series Cable Operated Level Switch

## BT10

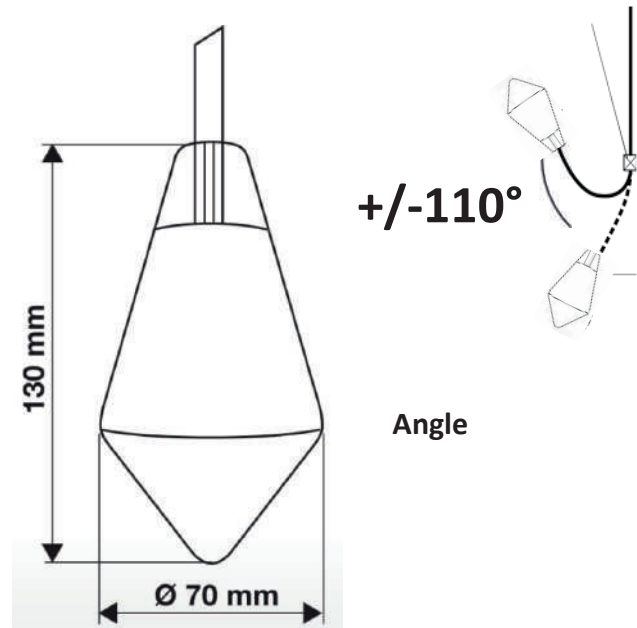
This float level switch (NO or NC) allows the automation of small pumps (upto 1.5 HP) thanks to its microswitch of 20 A (400V) or unlimited through a relay.

Thanks to its wide switching angle of  $110^\circ$ , it protects the pump's engine and the electrical panels from jerking. This feature is highly appreciated in agitated liquids. Also, it can detect the both high and low level in the same tank whose hysteresis does not exceed 1.5 meter.



Allowed fluid densities	0,70 à 1,15 g/cm <sup>3</sup>
Cut-out power	20 (8) A
Maximum pressure	3,5 bars
Maximum temperature	85 °C
Protection index	IP 68
Housing	Copolymer polypropylene
Type of cable	Neoprene, HR HY 3X1 mm <sup>2</sup>
Float weight with out cable	105 g

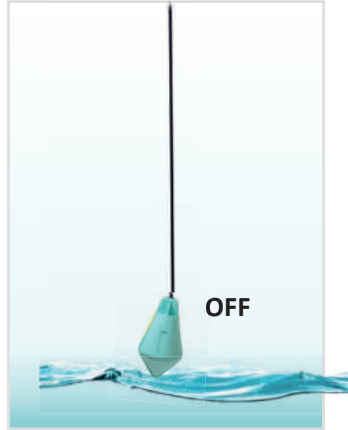
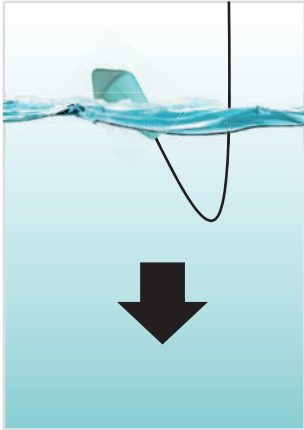
### Dimension



# BT Series Cable Operated Level Switch

## BT10

### OPERATION

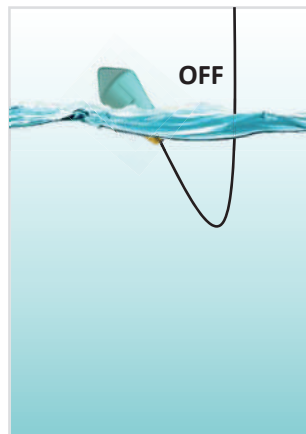


The pump empties the tank.

When the fluid level drops below the float, the power goes off

Connection

### FILLING



The pump fills the tank.

When the liquid reaches the float, it tilt shut off the power to the pump

Conexión

### Installations examples



Connection to the pump.



Connecting to an alarm



Connecting to a multifunction plug